



East of England
Strategic Clinical Networks

Cancer Intelligence Report

Quarter 4 2013/14 (Jan/Feb/Mar)

Published: June 2014

Prepared by

James Perry, Quality Improvement Lead

East of England Strategic Clinical Network

Contents

Executive summary	1
Introduction.....	1
Key data sources and technical information.....	1
Domain 1: Preventing People Dying Prematurely	3
Is there variation in cancer outcomes?.....	3
National CCG Outcomes Indicator Set	3
GP Cancer profiles	5
Which of our populations are most at risk of cancer?	5
Lifestyle indicators.....	5
Does the population have equal access to screening?	6
Breast cancer screening	6
Bowel cancer screening	6
Cervical cancer screening.....	6
Screening coverage and uptake summary.....	6
Is there equity in how people are diagnosed?.....	8
Access to diagnostics.....	8
Routes to diagnosis.....	9
Stage at diagnosis.....	14
Cancer waits performance	16
Do cancer patients have equity of access to clinical trials?	31
Accrual by the Research Networks	31
Domain 2: Enhancing Quality of Life for People with Long-Term Conditions	32
What are patient reported outcomes for cancer patients (PROMS)?.....	32
Do cancer patients have access to information and support they need?.....	32
Domain 3: Helping people to recover from episodes of ill health or following injury.....	32
National enhanced recovery programme indicators.....	32
Are people undergoing enhanced recovery programme procedures spending less time in hospital following their surgery (LOS)?	32
Domain 4: Ensuring People Have a Positive Experience of Care	32
Are cancer patients reporting they are satisfied with their care? (patient experience surveys)	32
Are cancer patients dying at their preferred place of death?.....	33
Domain 5: Treating and Caring for People in a Safe Environment and Protecting Them From Avoidable Harm	34
Are the Network's trusts meeting peer review measures?	34
Has the Network implemented Improving Outcomes Guidance?.....	34
Overarching indicators.....	35
Are Cancer MDTs submitting data as required to national audits and for cancer registration purposes?	35
COSD.....	35
SACT Chemotherapy dataset	36
Radiotherapy dataset	37
Clinical Audits.....	37
What are our clinical outcome datasets telling us?	38

Executive summary

Introduction

The purpose of the Cancer Intelligence Report is to pull together information relevant to cancer commissioning and monitoring of cancer services across the East of England. The report is updated quarterly and reported to the Local Cancer Forums and Strategic Clinical Network's Cancer Steering Group. It aims to highlight variation in cancer services to enable localities to identify where their service is significantly different to others and therefore may warrant further investigation.

Where appropriate local cancer information is compared to the East of England, Area Team and England average to highlight variation. The report presents and links to data under each of the NHS Outcome domains.

Key data sources and technical information

When presenting information below cancer network level a colour coding is used show which cancer network is relevant; **Anglia**, **Mount Vernon (Beds & Herts)** and **Essex**.

Bedfordshire is covered by Mount Vernon and Anglia Cancer Networks. Anglia covers two thirds of the county and therefore, for reporting purposes, Bedfordshire is fully included within Anglia totals.

The sum of the cancer networks do not total to the East of England Strategic Clinical Network total. This is because West Essex CCG and Princess Alexandra Hospital are currently excluded from the geographies of Anglia, Mount Vernon and Essex cancer networks. The CCG and Trust are part of the North London cancer network but are within the East of England Strategic Clinical Network. Essex Cancer Network and Essex Area Team totals also differ for the same reason.

Further information relating to data presented in this report is available:

Cancer Commissioning Toolkit

This provides a comprehensive set of information relating to cancer.

<https://www.cancertoolkit.co.uk/>

National Cancer Intelligence Network (NCIN)

NCIN provide a list of free access and authorised access sites that contain cancer information. Of particular relevance are the tumour specific data hubs, COSD updates, data atlases showing cancer incidence, mortality and survival by cancer network and local authority broken down by the main tumour types.

http://www.ncin.org.uk/cancer_information_tools/default.aspx

Public Health Data and Knowledge Gateway

This provides a useful set of links to key health datasets.

<http://datagateway.phe.org.uk/>

Domain 1: Preventing People Dying Prematurely

Is there variation in cancer outcomes?

National CCG Outcomes Indicator Set

The NHS mandate contains a number of priorities relevant to cancer and sets a number of indicators within Domain 1:

National Outcomes Framework Indicators 2014/15 relevant to cancer:

- 1.4 Under 75 mortality from cancer (also 4.4 Public Health Outcomes Framework Indicator)
- 1.4 (i) One- and five-year survival from all cancers
- 1.4 (ii) One- and five-year survival from breast, lung and colorectal cancer
- 1.6 (iii) Five-year survival from all cancers in children

The above indicators are published at a national level (1.4 also published at upper and lower tier local authority level). The CCG Outcomes Indicator Set 2014/15 contains a list of indicators that will be available at CCG level.

2014/15 CCG indicators relevant to cancer

- Under 75 mortality from cancer (publication in September 2014)
- One year survival from all cancers (publication in June 2014)
- One year survival from breast, lung and colorectal cancer combined (publication in June 2014)
- Cancer: diagnosis via emergency routes (publication TBC)
- Cancer: record of stage at diagnosis (publication TBC)
- Cancer: early detection (publication TBC)
- Lung cancer: record of stage at diagnosis (publication TBC)
- Breast cancer: mortality (publication TBC)

It has been decided not to publish survival for breast, lung and colorectal separately and five year survival at CCG level. This decision is being challenged by the All-Party Parliamentary Group on Cancer¹.

¹ <http://www.parliament.uk/business/committees/committees-a-z/commons-select/backbench-business-committee/news/debate-on-cancer-all-party-group-report/>

Directly age and sex standardised mortality rate (DSR) per 100,000, 95% confidence intervals (CI)

Under 75 mortality in 2012	Person			Male			Female		
	DSR	CI Lower	CI Upper	DSR	CI Lower	CI Upper	DSR	CI Lower	CI Upper
NHS Basildon and Brentwood CCG	123.85	110.25	138.68	131.40	111.63	153.66	116.33	98.10	136.95
NHS Bedfordshire CCG	113.69	103.59	124.50	127.89	112.94	144.26	99.52	86.22	114.28
NHS Cambridgeshire and Peterborough CCG	114.89	107.41	122.76	120.41	109.72	131.86	109.39	99.08	120.49
NHS Castle Point, Rayleigh and Rochford CCG	115.70	101.07	131.84	125.37	104.00	149.83	106.05	86.68	128.43
NHS East and North Hertfordshire CCG	119.32	109.93	129.28	123.63	110.23	138.19	115.02	102.10	129.11
NHS Great Yarmouth & Waveney CCG	129.78	116.27	144.43	145.06	125.34	166.98	114.54	96.50	134.95
NHS Herts Valleys CCG	104.65	95.99	113.88	104.95	92.80	118.25	104.35	92.22	117.63
NHS Ipswich and East Suffolk CCG	118.21	107.84	129.31	122.11	107.44	138.22	114.32	99.94	130.18
NHS Luton CCG	126.64	108.91	146.41	125.09	101.16	152.92	128.19	102.79	157.93
NHS Mid Essex CCG	114.57	104.00	125.93	119.49	104.43	136.11	109.67	95.12	125.81
NHS North East Essex CCG	125.95	114.36	138.38	127.88	111.56	145.90	124.02	107.90	141.86
NHS North Norfolk CCG	114.50	100.56	129.81	132.56	111.73	156.09	96.49	78.52	117.28
NHS Norwich CCG	114.69	99.43	131.61	119.62	97.92	144.69	109.76	88.97	133.94
NHS South Norfolk CCG	101.38	89.15	114.81	107.04	89.64	126.81	95.74	79.02	114.94
NHS Southend CCG	113.20	97.79	130.35	104.18	83.77	128.07	122.20	99.74	148.20
NHS Thurrock CCG	132.51	113.43	153.87	133.02	106.26	164.44	131.99	105.66	162.88
NHS West Essex CCG	121.00	108.19	134.89	135.76	116.75	156.97	106.27	89.55	125.20
NHS West Norfolk CCG	121.01	105.85	137.70	139.55	116.79	165.42	102.50	83.13	124.99
NHS West Suffolk CCG	113.96	101.31	127.75	113.05	95.62	132.72	114.88	96.96	135.13
East Anglia AT	115.73	111.58	120.00	123.35	117.35	129.57	108.14	102.44	114.08
Essex AT	120.50	115.38	125.78	125.32	117.98	132.99	115.69	108.63	123.08
Hertfordshire and South Midlands AT	119.24	114.92	123.68	124.28	118.10	130.70	114.21	108.23	120.44
England	123.26	122.30	124.24	131.05	129.65	132.47	115.49	114.17	116.83

Source: HSCIC, September 2013

Notes: Shaded cells = Under75 mortality rates above national average, bold cells = significantly above/below national average.

The lancet recently published² the results of the EURO CARE study. This continues to show that the UK has cancer survival rates below many other countries.

Survival in the UK and Ireland was intermediate for rectal cancer, breast cancer, prostate cancer, skin melanoma, and non-Hodgkin lymphoma, but low for kidney, stomach, ovarian, colon, and lung cancers. Survival for lung cancer in the UK and Ireland was much lower than for other regions for all periods.

² The Lancet Oncology, Volume 15, Issue 1, Pages 23 - 34, January 2014

GP Cancer profiles

General Practice profiles bring together a range of process and outcomes information relevant to cancer in Primary Care. These profiles provide readily available and comparative information for benchmarking and reviewing variation at a General Practice level.

The General Practice Profiles are updated annually with the most recent published in December 2013. Profiles are available for individual practices with a list size over 1,000

<https://www.cancertoolkit.co.uk/Profiles/Practice/Overview>

Whilst they are useful, the SCN has had consistent feedback from GPs that they find the national profiles difficult to interpret. The Strategic Clinical Network has therefore published CCG GP cancer profile packs which provide an analysis of the GP cancer profiles and allow trend comparison over the four years the profiles have been produced.

These were circulated to CCGs and GPs in May 2014 and are available by request to james.perry@nhs.net.

Which of our populations are most at risk of cancer?

Lifestyle indicators

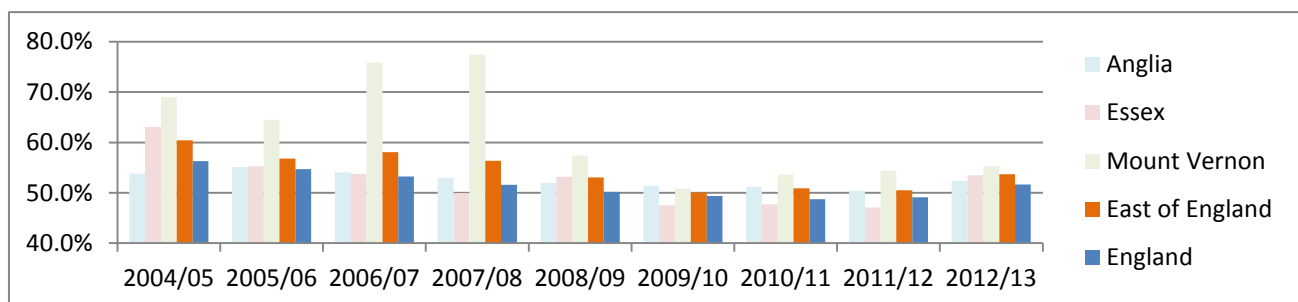
- Summary of Strategic Needs Assessment information relevant to cancer
- Smoking prevalence and cessation rates

This indicator shows the number of people setting a quit date and the number of people who have successfully quit at 4 weeks through NHS Stop Smoking Services.

The percentage of people who successfully quit through NHS Stop Smoking Services (data shows self-reported quitters)

The take-up of services is affected by National and local campaigns, local funding and national changes (e.g. Smoke-free legislation) and the population served.

% of those setting a quit date who report they have successfully quit at 4 weeks



Does the population have equal access to screening?

Breast cancer screening

The NHS Breast Screening Programme provides breast screening every three years for women aged between 50 and 70. It is in the process of being extended so that all women are invited for nine screening rounds between 47 and 73 years with a guarantee that women will have their first invitation for screening before the age of 50. Full implementation is expected to be completed after 2016.

Bowel cancer screening

The NHS Bowel Cancer Screening Programme offers Faecal Occult Blood test (FOBt) screening every two years to all men and women aged 60 to 70. From April 2010 the programme was age extended to men and women up to their 75th birthday.

The national cancer outcomes strategy has an ambition to introduce flexi sigmoid screening to complement FOBt. 50-64 year olds will be invited with a target to achieve 30% coverage by 2013/14 and 60% by 2015/16.

Cervical cancer screening

The NHS Cervical Screening Programme provides all women between the ages of 25 and 64 a cervical screening test every three to five years. National policy for the screening programme is that eligible women aged 25-49 are to be screened every 3.5 years and women aged 50-64 are to be screened every 5 years. This is intended to detect abnormalities within the cervix that could, if untreated, develop into cancer.

Screening coverage and uptake summary

The table below shows the coverage for each cancer screening programme. CCGs not achieving national programme targets have been highlighted. This data shows year to date progress and is also available at individual GP practice level.

Screening programme Year to date September 2013	Breast Screening				Bowel Cancer Screening				Cervical Screening		
	50-70		47-73		60-69		60-74		25-49	50-64	25-64
	Uptake %	3 year coverage %	Uptake %	3 year coverage %	Uptake %	2.5 year coverage %	Uptake %	2.5 year coverage %	3.5 year coverage %	5.5 year coverage %	3.5/5.5-year coverage %
NHS Basildon and Brentwood CCG	71.4	69.8	71.2	57.4	58.7	58.6	58.3	58.4	72.9	79.5	75.0
NHS Bedfordshire CCG	76.9	73.9	76.2	65.0	58.3	60.6	58.0	53.3	75.0	81.5	77.1
NHS Cambridgeshire and Peterborough CCG	73.5	70.4	72.7	64.0	58.5	60.3	58.8	53.5	71.0	80.2	73.8
NHS Castle Point, Rayleigh and Rochford CCG	75.0	71.7	74.7	60.6	61.3	60.8	60.7	59.6	77.7	81.2	79.0
NHS East and North Hertfordshire CCG	75.1	72.1	74.7	62.1	59.0	60.3	59.4	60.9	74.4	81.0	76.5
NHS Great Yarmouth & Waveney CCG	76.1	78.7	75.7	72.9	60.9	62.5	60.7	62.8	73.3	79.0	75.4
NHS Herts Valleys CCG	72.5	71.3	72.2	61.5	55.8	58.6	56.5	58.0	72.8	79.7	74.9
NHS Ipswich and East Suffolk CCG	79.4	80.5	79.0	69.7	62.6	64.0	62.4	57.3	73.9	79.8	76.0
NHS Luton CCG	69.5	67.4	69.3	58.5	48.6	50.8	48.9	44.5	66.3	80.8	70.0
NHS Mid Essex CCG	75.7	75.0	75.1	64.3	60.7	62.5	60.4	54.9	73.9	79.3	75.6
NHS North East Essex CCG	77.1	76.2	76.6	66.0	59.1	61.3	58.7	52.9	74.5	81.1	76.7
NHS North Norfolk CCG	78.9	81.2	77.9	74.3	65.1	66.6	65.8	67.3	76.2	79.4	77.5
NHS Norwich CCG	76.1	75.7	74.8	68.1	61.4	63.3	61.9	63.9	71.7	79.7	74.0
NHS South Norfolk CCG	78.3	80.9	78.0	73.3	66.4	68.1	66.5	68.2	76.2	80.1	77.6
NHS Southend CCG	65.5	63.7	65.3	52.4	52.9	53.0	52.5	51.9	70.3	75.8	72.0
NHS Thurrock CCG	71.7	65.7	71.4	53.5	56.1	55.1	55.3	54.9	71.4	78.8	73.4
NHS West Essex CCG	75.1	71.8	75.0	58.9	58.0	58.8	58.3	56.9	74.5	80.3	76.3
NHS West Norfolk CCG	75.4	76.1	75.1	70.7	60.3	62.0	60.1	62.4	71.8	76.8	73.7
NHS West Suffolk CCG	75.9	78.3	75.3	67.6	62.5	63.7	62.6	63.5	74.4	80.0	76.3
East of England	75	76.9	74.6	71	N/a	N/a	N/a	N/a	73.1	79.9	75.3
National target	70		70		60		60		80	80	80

Source: Open Exeter, June 2014

Notes:

Bold/shading indicates below national target

Uptake is the percentage of the population invited to screening within the previous year who are screened within six months.

Coverage is the percentage of the population who are eligible for screening on the last day of the screening review period who have had a test with a recorded result within the time period specified.

Uptake and coverage rates for bowel cancer screening exclude individuals on surveillance. The rates are for people on routine recall only.

Is there equity in how people are diagnosed?

Access to diagnostics

The Diagnostic Imaging Dataset (DID) is a new monthly data collection covering data on diagnostic imaging tests on NHS patients in England. It includes estimates of GP usage of direct access to key diagnostics tests for cancer, for example chest imaging, non-obstetric ultrasound and MRI brain.

A main driver for the creation of the DID was to assess use of diagnostic imaging that could contribute to the early diagnosis of cancer, and in particular, General Practitioner (GP) direct access to these tests. To enable this analysis a subset of procedures particularly used to identify or discount a diagnosis of cancer have been identified:

Brain (MRI)

- This may diagnose brain cancer, this includes – MRI of brain (often with contrast);

Kidney or bladder (Ultrasound)

- This may diagnose kidney or bladder cancer, this includes – ultrasound of kidney, ultrasound scan of bladder or ultrasound and doppler scan of kidney;

Chest and/or abdomen (CT)

- CTs which may diagnose lung cancer, this includes - Chest + Abdominal CT, CT of chest (high resolution or other), CT thorax + abdomen with contrast, CT thorax with contrast or CT chest + abdomen;

Chest (X-ray)

- This may diagnose lung cancer, this includes – Plain chest X-ray only;

Abdomen and/or pelvis (Ultrasound)

- This may diagnose ovarian cancer, this includes – Ultrasonography of pelvis, Ultrasonography of abdomen (upper, lower or other) or abdomen + pelvis.

Note, brain MRI, chest x-ray and ultrasounds of the abdomen and pelvis to diagnose Ovarian Cancer are three of the key tests which are outlined in Improving Outcomes: a Strategy for Cancer.

Although these tests are used to diagnose cancer, many of the tests also have wider clinical uses. Within this data, it is not possible to distinguish between the different uses of these tests.

The data are published in monthly summaries.

<http://www.england.nhs.uk/statistics/statistical-work-areas/diagnostic-imaging-dataset/diagnostic-imaging-datasetdiagnostic-imaging-dataset-2013-14-data/>

Routes to diagnosis

In December 2013 the National Cancer Intelligence Network published an update to the Routes to Diagnosis study. The methodology is consistent with previous Routes to Diagnosis work. Improved linkage to HES data has helped to reduce the proportion of tumours with an unknown Route and provided a better understanding of how other Routes originated.

The report looks at all newly diagnosed cancers and splits them into the following routes to diagnosis.

Referral route	Grouping at CCG level	Description
Screen Detected	Screen Detected	Detected via the breast, cervical or bowel screening programmes
Two Week Wait	Managed	Urgent GP referral with a suspicion of cancer
GP Referral	Managed	Routine and urgent referrals where the patient was not referred under the Two Week Wait referral route
Other Outpatient	Managed	An elective route starting with an outpatient appointment: either self-referral, consultant to consultant, other referral
Inpatient Elective	Managed	Where no earlier admission can be found prior to admission from a waiting list, booked or planned
Emergency Presentation	Emergency Presentation	An emergency route via A&E, emergency GP referral, emergency transfer, emergency consultant outpatient referral, emergency admission or attendance
Death Certificate Only	Other	No data available from Inpatient or Outpatient HES, CWT, Screening and with a death certificate only diagnosis flagged by the registry in the NCDR
Unknown	Other	No data available from Inpatient or Outpatient HES, CWT, Screening within set time parameters or unknown referral

Source: http://www.ncin.org.uk/publications/routes_to_diagnosis (CCG breakdown in Workbook b)

The Routes to Diagnosis is presented at Strategic Clinical Network level and includes a breakdown for the big 4 cancers at CCG level. NCIN state that “*CCGs that fall outside the ‘3SD’ limits can be considered to be in an ‘alarm’ zone, with the difference warranting further investigation.*” Screen detected and managed presentations are negative outliers when they are 3SD lower than the national rate, emergency and other are negative outliers when they are 3SD higher than the national rate.

Some CCGs may note they are a positive outlier for screening/managed and a negative outlier for emergency/other CCGs or vice versa. This is unexpected as the two should be linked i.e. if you have higher managed referrals you should have lower emergency. It is explained due to the fact each diagnosis route is compared to the national mean. Therefore, it is recommended that CCGs look at the percentage flow by route in addition to the rate per 100,000. CCGs with negative outliers and a % by route that looks worse than the national average may want to investigate further.

East of England		Screen detected	Two Week Wait	GP referral	Other Outpatient	Inpatient Elective	Emergency presentation	Death Certificate Only	Unknown	Number of cases
All Malignant Neoplasms (excl. NMSC)		6%	27%	29%	9%	3%	21%	0%	5%	139,257
	Confidence interval	6% 6%	27% 27%	29% 29%	9% 9%	3% 3%	21% 21%	0% 0%	5% 6%	
Bladder			32%	31%	12%	4%	17%		4%	4,546
	Confidence interval		31% 33%	30% 32%	11% 13%	4% 5%	16% 18%		3% 4%	
Bladder (in situ)			21%	47%	17%	6%	4%		5%	987
	Confidence interval		19% 24%	44% 50%	14% 19%	5% 8%	3% 6%		4% 7%	
Female breast cancer		30%	41%	17%	3%	0%	4%		5%	21,791
	Confidence interval	29% 31%	41% 42%	16% 17%	3% 3%	0% 0%	3% 4%		5% 6%	
Female Breast (in-situ)		62%	12%	16%	5%	0%	1%		4%	2,761
	Confidence interval	60% 64%	11% 13%	14% 17%	4% 6%	0% 1%	1% 1%		4% 5%	
Central Nervous System (incl brain) malignant			1%	19%	15%	5%	56%		4%	2,259
	Confidence interval		0% 1%	18% 21%	13% 16%	4% 6%	54% 59%		3% 5%	
Central Nervous System (incl brain) non-invasive			0%	42%	13%	3%	39%		3%	2,321
	Confidence interval		0% 0%	40% 44%	12% 15%	2% 3%	37% 41%		3% 4%	
Cervix		19%	16%	34%	14%	1%	11%		4%	1,134
	Confidence interval	17% 21%	14% 18%	32% 37%	12% 16%	1% 2%	10% 13%		3% 6%	
Cervix (in-situ)		6%	0%	55%	32%	2%	1%		4%	13,515
	Confidence interval	6% 7%	0% 0%	54% 55%	32% 33%	2% 2%	0% 1%		4% 5%	
Colorectal		6%	25%	29%	7%	5%	24%	0%	5%	17,691
	Confidence interval	5% 6%	25% 26%	28% 29%	6% 7%	5% 5%	23% 25%	0% 0%	4% 5%	
Cancer of Unknown Primary			9%	22%	7%	1%	54%		6%	3,054
	Confidence interval		8% 10%	21% 24%	6% 8%	1% 2%	53% 56%		5% 6%	
Head and neck – Larynx			31%	45%	11%	1%	8%		4%	802
	Confidence interval		28% 34%	42% 49%	9% 13%	1% 2%	7% 11%		3% 6%	
Head and Neck - non specific			26%	45%	17%	1%	7%		4%	315
	Confidence interval		21% 31%	39% 50%	13% 21%	1% 3%	5% 10%		3% 7%	
Head and neck - Oral cavity			30%	30%	31%	0%	4%		5%	998
	Confidence interval		27% 33%	27% 33%	28% 34%	0% 1%	3% 5%		4% 6%	
Head and neck - Oropharynx			40%	34%	11%	2%	5%		7%	774
	Confidence interval		37% 44%	31% 38%	9% 14%	1% 4%	4% 7%		5% 9%	
Head and neck - Otherf (excl. oral cavity, oropharynx, larynx & thyroid)			29%	39%	18%	2%	8%		5%	665
	Confidence interval		25% 32%	35% 43%	16% 22%	1% 3%	6% 10%		3% 7%	
Head and neck – Thyroid			13%	56%	15%	2%	6%		8%	911
	Confidence interval		11% 16%	53% 59%	13% 18%	1% 3%	5% 8%		7% 10%	
Hodgkin lymphoma			25%	39%	12%	3%	17%		6%	834
	Confidence interval		22% 28%	36% 42%	10% 14%	2% 4%	14% 19%		4% 8%	
Kidney and unspecified urinary organs			20%	34%	17%	2%	23%		4%	3,698
	Confidence interval		19% 22%	32% 35%	16% 18%	2% 3%	22% 24%		4% 5%	
Leukaemia: acute myeloid			2%	25%	11%	6%	52%		5%	1,209
	Confidence interval		1% 3%	23% 28%	9% 13%	4% 7%	49% 54%		4% 6%	
Leukaemia: chronic lymphocytic			11%	51%	10%	1%	14%		12%	1,329
	Confidence interval		10% 13%	49% 54%	9% 12%	1% 2%	12% 16%		11% 14%	
Leukaemia: other (all excluding AML and CLL)			5%	32%	10%	4%	42%		7%	1,042
	Confidence interval		4% 7%	29% 35%	9% 12%	3% 5%	39% 45%		5% 8%	
Liver			8%	28%	12%	2%	44%		5%	1,331
	Confidence interval		6% 9%	26% 31%	11% 14%	2% 4%	42% 47%		4% 6%	
Lung			23%	23%	11%	2%	37%	0%	4%	15,812
	Confidence interval		22% 23%	23% 24%	11% 12%	2% 3%	36% 38%	0% 0%	3% 4%	
Melanoma			43%	36%	7%	1%	2%		12%	5,547
	Confidence interval		41% 44%	35% 37%	6% 7%	1% 1%	1% 2%		12% 13%	
Mesothelioma			16%	29%	18%	2%	33%		2%	1,274
	Confidence interval		14% 18%	26% 31%	16% 20%	2% 3%	31% 36%		1% 3%	
Multiple myeloma			10%	40%	12%	2%	32%		4%	2,124
	Confidence interval		9% 12%	38% 42%	10% 13%	2% 3%	30% 34%		3% 5%	
Non-Hodgkin lymphoma			17%	38%	10%	2%	27%		5%	5,365
	Confidence interval		16% 18%	37% 40%	9% 11%	2% 3%	26% 28%		5% 6%	
Oesophagus			38%	20%	6%	11%	20%		5%	3,293
	Confidence interval		37% 40%	19% 22%	5% 7%	10% 12%	19% 22%		4% 5%	
Other malignant neoplasms		0%	13%	32%	15%	3%	31%	0%	6%	3,568
	Confidence interval	0% 0%	12% 14%	31% 34%	14% 16%	2% 4%	30% 33%	0% 0%	5% 7%	
Ovary			24%	29%	10%	2%	30%		5%	3,314
	Confidence interval		23% 26%	27% 30%	9% 11%	2% 3%	28% 31%		4% 6%	
Pancreas			13%	22%	9%	4%	46%		6%	3,952
	Confidence interval		12% 14%	21% 24%	8% 10%	3% 5%	44% 47%		5% 7%	
Prostate			31%	44%	9%	3%	7%		6%	19,713
	Confidence interval		30% 32%	43% 45%	9% 10%	3% 3%	7% 7%		6% 7%	
Sarcoma: connective and soft tissue			9%	47%	16%	2%	18%		8%	534
	Confidence interval		7% 11%	43% 51%	13% 20%	1% 4%	15% 22%		6% 11%	
Stomach			25%	21%	7%	10%	32%		5%	3,075
	Confidence interval		23% 26%	20% 23%	6% 8%	9% 12%	30% 34%		4% 6%	
Testis			51%	20%	8%	3%	9%		9%	938
	Confidence interval		48% 54%	18% 23%	6% 10%	2% 5%	7% 11%		7% 11%	
Uterus			41%	39%	6%	1%	7%		5%	3,669
	Confidence interval		40% 43%	38% 41%	6% 7%	1% 1%	6% 8%		4% 5%	
Vulva			33%	41%	11%	2%	6%		6%	488
	Confidence interval		29% 38%	37% 46%	9% 14%	1% 4%	4% 8%		5% 9%	

2006-2010

Directly age-standardised rate per 100, 000 population by route						Percentage by Route			
Bordered cells indicate 3 SD outliers on respective funnel plots (green positive, red negative outlier)									
Female Breast Cancer	Screen detected	Managed	Emergency presentation	Other	Number of cases	Screen detected	Managed	Emergency presentation	Other
England	38.4	71.2	3.9	6.0	191,120	28%	62%	5%	5%
Confidence interval	38.1 38.7	70.8 71.6	3.8 4.0	5.9 6.1		28% 29%	62% 62%	5% 5%	5% 5%
NHS Basildon And Brentwood CCG	31.3	65.1	3.2	7.7	838	26%	64%	4%	6%
Confidence interval	27.1 35.5	59.6 70.7	2.1 4.2	5.6 9.7		23% 29%	60% 67%	3% 6%	5% 8%
NHS Bedfordshire CCG	49.3	71.4	3.1	8.0	1,579	34%	57%	3%	6%
Confidence interval	45.1 53.4	66.7 76.0	2.3 3.9	6.3 9.6		32% 37%	54% 59%	3% 4%	5% 7%
NHS Cambridgeshire And Peterborough CCG	39.2	69.4	2.8	6.6	2,836	30%	61%	4%	5%
Confidence interval	36.6 41.9	66.1 72.6	2.2 3.3	5.5 7.6		28% 32%	59% 63%	3% 4%	5% 6%
NHS Castle Point And Rochford CCG	34.8	71.4	3.5	6.1	715	28%	62%	5%	5%
Confidence interval	30.1 39.6	64.8 78.1	2.3 4.7	4.0 8.1		25% 32%	59% 66%	3% 6%	3% 6%
NHS East And North Hertfordshire CCG	38.5	69.4	2.1	10.9	1,892	27%	61%	3%	9%
Confidence interval	35.2 41.8	65.4 73.4	1.5 2.7	9.3 12.6		26% 30%	59% 64%	2% 3%	8% 10%
NHS Great Yarmouth And Waveney CCG	34.5	66.0	4.2	3.9	858	27%	64%	5%	3%
Confidence interval	30.1 39.0	60.5 71.5	3.0 5.5	2.4 5.3		24% 30%	61% 68%	4% 7%	2% 4%
NHS Herts Valleys CCG	34.2	70.6	2.4	9.3	1,937	25%	64%	3%	8%
Confidence interval	31.1 37.2	66.7 74.5	1.8 3.0	7.8 10.8		23% 27%	62% 66%	3% 4%	7% 9%
NHS Ipswich And East Suffolk CCG	39.7	68.2	2.8	6.8	1,518	31%	60%	3%	5%
Confidence interval	36.1 43.3	63.8 72.6	2.0 3.5	5.4 8.3		29% 33%	58% 63%	3% 5%	4% 7%
NHS Luton CCG	38.5	67.4	3.9	3.7	535	29%	64%	4%	3%
Confidence interval	32.5 44.6	60.3 74.6	2.3 5.6	2.0 5.4		25% 33%	59% 68%	3% 6%	2% 5%
NHS Mid Essex CCG	44.2	69.3	2.1	7.7	1,473	33%	59%	2%	6%
Confidence interval	40.3 48.2	64.7 73.9	1.4 2.7	6.1 9.3		30% 35%	57% 62%	2% 3%	5% 7%
NHS North East Essex CCG	39.3	70.8	2.2	4.4	1,270	31%	62%	3%	4%
Confidence interval	35.5 43.2	65.9 75.8	1.5 2.9	3.1 5.7		29% 34%	60% 65%	2% 4%	3% 5%
NHS North Norfolk CCG	43.4	76.2	3.3	3.2	836	32%	61%	4%	3%
Confidence interval	38.2 48.6	69.6 82.8	2.2 4.5	1.9 4.4		29% 35%	58% 65%	3% 6%	2% 4%
NHS Norwich CCG	41.1	66.4	2.6	3.7	649	31%	63%	3%	3%
Confidence interval	35.4 46.7	59.9 72.9	1.5 3.8	2.1 5.3		28% 35%	59% 66%	2% 5%	2% 5%
NHS South Norfolk CCG	44.9	68.5	2.8	5.9	948	34%	57%	3%	5%
Confidence interval	40.0 49.7	62.7 74.2	1.9 3.8	4.2 7.7		31% 38%	54% 60%	3% 5%	4% 7%
NHS Southend CCG	35.3	74.7	4.4	6.9	667	24%	65%	6%	5%
Confidence interval	29.9 40.7	67.7 81.8	3.0 5.8	4.6 9.2		21% 28%	61% 68%	4% 8%	4% 7%
NHS Thurrock CCG	39.5	70.4	3.2	5.3	495	29%	62%	4%	4%
Confidence interval	33.1 45.9	62.6 78.3	1.7 4.6	3.1 7.6		26% 34%	58% 67%	2% 6%	3% 7%
NHS West Essex CCG	45.2	66.8	4.3	11.0	1,137	31%	56%	5%	8%
Confidence interval	40.5 49.8	61.6 72.0	3.2 5.4	8.7 13.2		29% 34%	53% 59%	4% 6%	7% 10%
NHS West Norfolk CCG	49.9	74.5	2.9	3.1	813	35%	59%	3%	2%
Confidence interval	44.1 55.7	67.9 81.2	1.8 4.0	1.7 4.4		32% 39%	56% 63%	2% 5%	2% 4%
NHS West Suffolk CCG	41.0	74.3	3.1	5.7	861	30%	62%	4%	4%
Confidence interval	36.1 46.0	68.0 80.7	2.0 4.1	3.9 7.5		27% 33%	58% 65%	3% 5%	3% 6%

2006-2010

Directly age-standardised rate per 100, 000 population by route						Percentage by Route				
Bordered cells indicate 3 SD outliers on respective funnel plots (green positive, red negative outlier)										
Colorectal		Screen detected	Managed	Emergency presentation	Other	Number of cases	Screen detected	Managed	Emergency presentation	Other
England		2.5	29.3	10.2	1.9	156,057	5%	66%	25%	4%
Confidence interval		2.5 2.6	29.1 29.4	10.1 10.3	1.9 1.9		5% 5%	66% 66%	25% 25%	4% 4%
NHS Basildon And Brentwood CCG		2.7	27.6	8.5	2.5	703	6%	67%	22%	6%
Confidence interval		1.8 3.5	25.1 30.1	7.1 9.8	1.7 3.3		4% 8%	63% 70%	19% 26%	4% 8%
NHS Bedfordshire CCG		2.1	29.0	9.4	2.5	1,142	4%	67%	23%	5%
Confidence interval		1.5 2.7	27.0 31.1	8.3 10.6	1.8 3.1		3% 6%	64% 70%	21% 26%	4% 7%
NHS Cambridgeshire And Peterborough CCG		2.5	29.1	9.4	2.0	2,340	5%	67%	24%	4%
Confidence interval		2.0 2.9	27.6 30.5	8.6 10.2	1.6 2.4		4% 6%	65% 69%	22% 26%	4% 5%
NHS Castle Point And Rochford CCG		2.1	26.0	8.0	1.6	540	5%	69%	23%	4%
Confidence interval		1.3 2.9	23.3 28.6	6.6 9.4	0.9 2.3		4% 7%	65% 72%	19% 26%	3% 6%
NHS East And North Hertfordshire CCG		2.5	26.3	8.6	2.4	1,377	5%	66%	23%	5%
Confidence interval		2.0 3.1	24.6 28.0	7.7 9.6	1.8 2.9		4% 7%	64% 69%	21% 26%	4% 7%
NHS Great Yarmouth And Waveney CCG		3.7	32.1	9.2	0.9	854	7%	69%	22%	2%
Confidence interval		2.8 4.6	29.6 34.7	7.9 10.5	0.5 1.3		6% 9%	66% 72%	19% 24%	1% 3%
NHS Herts Valleys CCG		3.0	24.8	8.5	1.9	1,393	6%	65%	24%	4%
Confidence interval		2.4 3.6	23.2 26.4	7.6 9.4	1.4 2.3		5% 8%	62% 67%	22% 27%	4% 6%
NHS Ipswich And East Suffolk CCG		1.7	29.3	10.6	2.1	1,338	3%	67%	26%	5%
Confidence interval		1.2 2.2	27.4 31.2	9.5 11.7	1.6 2.6		2% 4%	64% 69%	23% 28%	4% 6%
NHS Luton CCG		2.0	25.6	11.4	0.8	412	4%	64%	30%	2%
Confidence interval		1.0 2.9	22.5 28.7	9.4 13.4	0.3 1.4		2% 6%	59% 69%	26% 34%	1% 4%
NHS Mid Essex CCG		2.1	28.5	11.0	2.9	1,153	4%	64%	26%	6%
Confidence interval		1.5 2.7	26.5 30.6	9.8 12.2	2.2 3.6		3% 6%	61% 67%	24% 29%	4% 7%
NHS North East Essex CCG		2.4	29.3	9.4	1.8	1,145	4%	68%	24%	3%
Confidence interval		1.7 3.0	27.2 31.3	8.3 10.5	1.2 2.3		3% 6%	65% 71%	22% 27%	3% 5%
NHS North Norfolk CCG		4.7	26.6	8.9	1.0	690	10%	65%	22%	3%
Confidence interval		3.6 5.8	24.2 29.1	7.5 10.3	0.5 1.5		8% 13%	61% 68%	20% 26%	2% 4%
NHS Norwich CCG		6.6	28.2	8.1	1.5	603	12%	63%	22%	3%
Confidence interval		5.1 8.1	25.4 31.1	6.7 9.5	0.8 2.2		10% 15%	59% 67%	19% 25%	2% 5%
NHS South Norfolk CCG		6.3	27.2	8.5	1.6	834	13%	63%	20%	4%
Confidence interval		5.1 7.5	24.9 29.5	7.2 9.8	1.1 2.1		11% 15%	60% 66%	17% 23%	3% 6%
NHS Southend CCG		1.7	26.5	9.2	3.2	512	3%	64%	26%	6%
Confidence interval		0.9 2.5	23.6 29.3	7.7 10.8	2.1 4.3		2% 5%	60% 69%	23% 30%	4% 9%
NHS Thurrock CCG		3.3	28.1	11.4	1.8	380	7%	64%	26%	4%
Confidence interval		2.0 4.7	24.6 31.7	9.1 13.6	0.9 2.7		5% 10%	59% 69%	22% 30%	2% 6%
NHS West Essex CCG		2.0	27.1	9.6	3.6	838	4%	65%	24%	8%
Confidence interval		1.3 2.7	24.9 29.4	8.3 11.0	2.7 4.5		3% 6%	61% 68%	21% 27%	6% 10%
NHS West Norfolk CCG		4.0	31.6	8.5	3.3	726	8%	65%	22%	6%
Confidence interval		3.0 5.1	28.8 34.5	7.2 9.8	2.3 4.3		6% 10%	61% 68%	19% 25%	4% 8%
NHS West Suffolk CCG		3.2	29.8	11.1	2.5	760	6%	64%	25%	5%
Confidence interval		2.2 4.1	27.1 32.4	9.5 12.6	1.7 3.3		5% 8%	61% 67%	22% 29%	3% 7%

Directly age-standardised rate per 100, 000 population by route						Percentage by Route			
Bordered cells indicate 3 SD outliers on respective funnel plots (green positive, red negative outlier)									
Lung	Screen detected	Managed	Emergency presentation	Other	Number of cases	Screen detected	Managed	Emergency presentation	Other
Confidence interval		27.4 27.7	16.5 16.8	1.5 1.6		58%	38%	4%	
NHS Basildon And Brentwood CCG		23.3	14.5	1.5	682	57%	39%	4%	
Confidence interval		21.0 25.6	12.8 16.2	0.9 2.1		54%	61%	3%	
NHS Bedfordshire CCG		21.3	11.8	1.8	940	59%	36%	5%	
Confidence interval		19.5 23.0	10.6 13.1	1.3 2.2		56%	62%	4%	
NHS Cambridgeshire And Peterborough CCG		25.3	11.4	1.1	2,033	65%	32%	3%	
Confidence interval		23.9 26.7	10.5 12.2	0.8 1.4		63%	30%	3%	
NHS Castle Point And Rochford CCG		26.2	15.9	0.6	625	59%	40%	2%	
Confidence interval		23.5 28.9	14.0 17.9	0.2 1.0		55%	63%	1%	
NHS East And North Hertfordshire CCG		25.0	12.5	1.9	1,382	61%	34%	5%	
Confidence interval		23.3 26.7	11.4 13.7	1.5 2.4		58%	63%	4%	
NHS Great Yarmouth And Waveney CCG		28.7	13.0	0.7	784	65%	33%	2%	
Confidence interval		26.2 31.2	11.5 14.6	0.3 1.0		62%	68%	1%	
NHS Herts Valleys CCG		21.4	13.0	1.7	1,330	57%	38%	5%	
Confidence interval		19.9 22.9	11.9 14.2	1.3 2.1		54%	60%	4%	
NHS Ipswich And East Suffolk CCG		21.0	11.0	0.9	1,010	60%	37%	3%	
Confidence interval		19.4 22.7	9.9 12.1	0.6 1.2		57%	63%	2%	
NHS Luton CCG		25.5	17.4	1.8	441	56%	40%	4%	
Confidence interval		22.3 28.7	14.8 19.9	1.0 2.6		51%	61%	3%	
NHS Mid Essex CCG		19.0	12.5	1.2	858	56%	40%	4%	
Confidence interval		17.3 20.6	11.1 13.8	0.8 1.7		53%	59%	3%	
NHS North East Essex CCG		20.5	16.2	1.1	977	52%	45%	3%	
Confidence interval		18.7 22.3	14.6 17.7	0.7 1.5		49%	55%	3%	
NHS North Norfolk CCG		21.1	10.5	0.9	569	62%	35%	3%	
Confidence interval		18.9 23.3	9.0 11.9	0.5 1.3		58%	66%	2%	
NHS Norwich CCG		27.7	12.5	1.2	548	65%	31%	3%	
Confidence interval		24.8 30.6	10.7 14.4	0.6 1.8		61%	69%	2%	
NHS South Norfolk CCG		21.4	12.8	0.8	698	60%	37%	3%	
Confidence interval		19.3 23.4	11.3 14.4	0.4 1.1		56%	63%	2%	
NHS Southend CCG		26.2	15.2	1.2	540	58%	39%	3%	
Confidence interval		23.3 29.1	13.2 17.3	0.6 1.8		54%	62%	2%	
NHS Thurrock CCG		30.5	19.1	1.3	444	58%	39%	3%	
Confidence interval		26.8 34.2	16.2 21.9	0.6 2.1		54%	63%	2%	
NHS West Essex CCG		23.6	14.7	2.1	846	55%	39%	5%	
Confidence interval		21.5 25.8	13.1 16.3	1.5 2.7		52%	59%	4%	
NHS West Norfolk CCG		23.0	12.4	1.4	589	61%	35%	4%	
Confidence interval		20.6 25.4	10.7 14.1	0.8 1.9		57%	65%	3%	
NHS West Suffolk CCG		22.0	10.7	0.6	551	62%	35%	3%	
Confidence interval		19.6 24.3	9.2 12.2	0.3 0.9		58%	66%	2%	

2006-2010

Directly age-standardised rate per 100, 000 population by route Bordered cells indicate 3 SD outliers on respective funnel plots (green positive, red negative outlier)						Percentage by Route						
Prostate	Screen detected	Managed	Emergency presentation	Other	Number of cases	Screen detected	Managed	Emergency presentation	Other			
											England	88.7
Confidence interval	88.3	89.2	8.7	9.0	5.6	5.8	85%	86%	9%	10%	5%	5%
NHS Basildon And Brentwood CCG	74.1	4.4	5.8	626	88%	6%	6%					
Confidence interval	67.9	80.3	3.0	5.8	4.0	7.6	85%	90%	4%	8%	5%	9%
NHS Bedfordshire CCG	100.1	8.6	9.5	1,449	85%	8%	8%					
Confidence interval	94.5	105.7	7.0	10.2	7.7	11.2	83%	87%	6%	9%	6%	9%
NHS Cambridgeshire And Peterborough CCG	99.7	5.9	8.3	2,778	87%	6%	7%					
Confidence interval	95.8	103.7	5.0	6.8	7.2	9.5	86%	89%	5%	7%	6%	8%
NHS Castle Point And Rochford CCG	79.5	9.1	4.1	600	85%	11%	4%					
Confidence interval	72.5	86.4	6.9	11.3	2.5	5.6	82%	88%	9%	14%	3%	6%
NHS East And North Hertfordshire CCG	100.8	5.9	10.8	1,809	86%	5%	9%					
Confidence interval	95.8	105.8	4.7	7.1	9.1	12.5	84%	88%	5%	7%	7%	10%
NHS Great Yarmouth And Waveney CCG	91.8	6.2	2.3	886	91%	7%	2%					
Confidence interval	85.4	98.1	4.6	7.8	1.4	3.3	89%	93%	5%	8%	2%	4%
NHS Herts Valleys CCG	70.2	6.1	6.0	1,308	85%	8%	7%					
Confidence interval	66.1	74.4	5.0	7.3	4.7	7.2	83%	87%	7%	10%	6%	8%
NHS Ipswich And East Suffolk CCG	85.8	6.7	4.6	1,369	88%	8%	5%					
Confidence interval	80.9	90.6	5.4	8.0	3.5	5.7	86%	89%	6%	9%	4%	6%
NHS Luton CCG	80.6	9.5	4.2	450	85%	10%	4%					
Confidence interval	72.6	88.7	6.8	12.3	2.3	6.0	82%	88%	8%	14%	3%	7%
NHS Mid Essex CCG	95.3	8.2	5.4	1,288	87%	8%	5%					
Confidence interval	89.7	100.8	6.6	9.8	4.0	6.7	85%	89%	7%	10%	4%	6%
NHS North East Essex CCG	73.9	5.6	3.7	1,015	88%	8%	4%					
Confidence interval	69.0	78.7	4.4	6.9	2.5	4.8	86%	90%	7%	10%	3%	5%
NHS North Norfolk CCG	99.8	6.0	5.0	867	89%	6%	4%					
Confidence interval	92.7	106.8	4.4	7.6	3.4	6.6	87%	91%	5%	8%	3%	6%
NHS Norwich CCG	94.9	5.6	2.7	617	91%	7%	2%					
Confidence interval	87.1	102.8	3.9	7.3	1.4	4.1	88%	93%	5%	9%	2%	4%
NHS South Norfolk CCG	99.2	5.4	5.3	999	90%	5%	5%					
Confidence interval	92.7	105.7	4.0	6.9	3.8	6.8	88%	91%	4%	7%	4%	6%
NHS Southend CCG	85.6	8.1	7.3	541	84%	9%	6%					
Confidence interval	77.8	93.5	5.9	10.4	4.9	9.8	81%	87%	7%	12%	5%	9%
NHS Thurrock CCG	75.8	8.6	2.5	335	87%	10%	3%					
Confidence interval	67.1	84.5	5.7	11.6	1.0	4.1	83%	90%	7%	14%	2%	5%
NHS West Essex CCG	107.3	7.3	14.5	1,121	83%	6%	10%					
Confidence interval	100.4	114.2	5.6	9.0	11.9	17.2	81%	86%	5%	8%	9%	12%
NHS West Norfolk CCG	82.0	6.5	3.9	694	88%	8%	4%					
Confidence interval	75.5	88.5	4.8	8.2	2.5	5.3	85%	90%	6%	10%	3%	6%
NHS West Suffolk CCG	118.8	5.4	15.2	1,024	86%	4%	10%					
Confidence interval	110.9	126.6	3.8	7.0	12.2	18.2	84%	88%	3%	6%	8%	12%

Source: Routes to Diagnosis Study, 2013

Stage at diagnosis

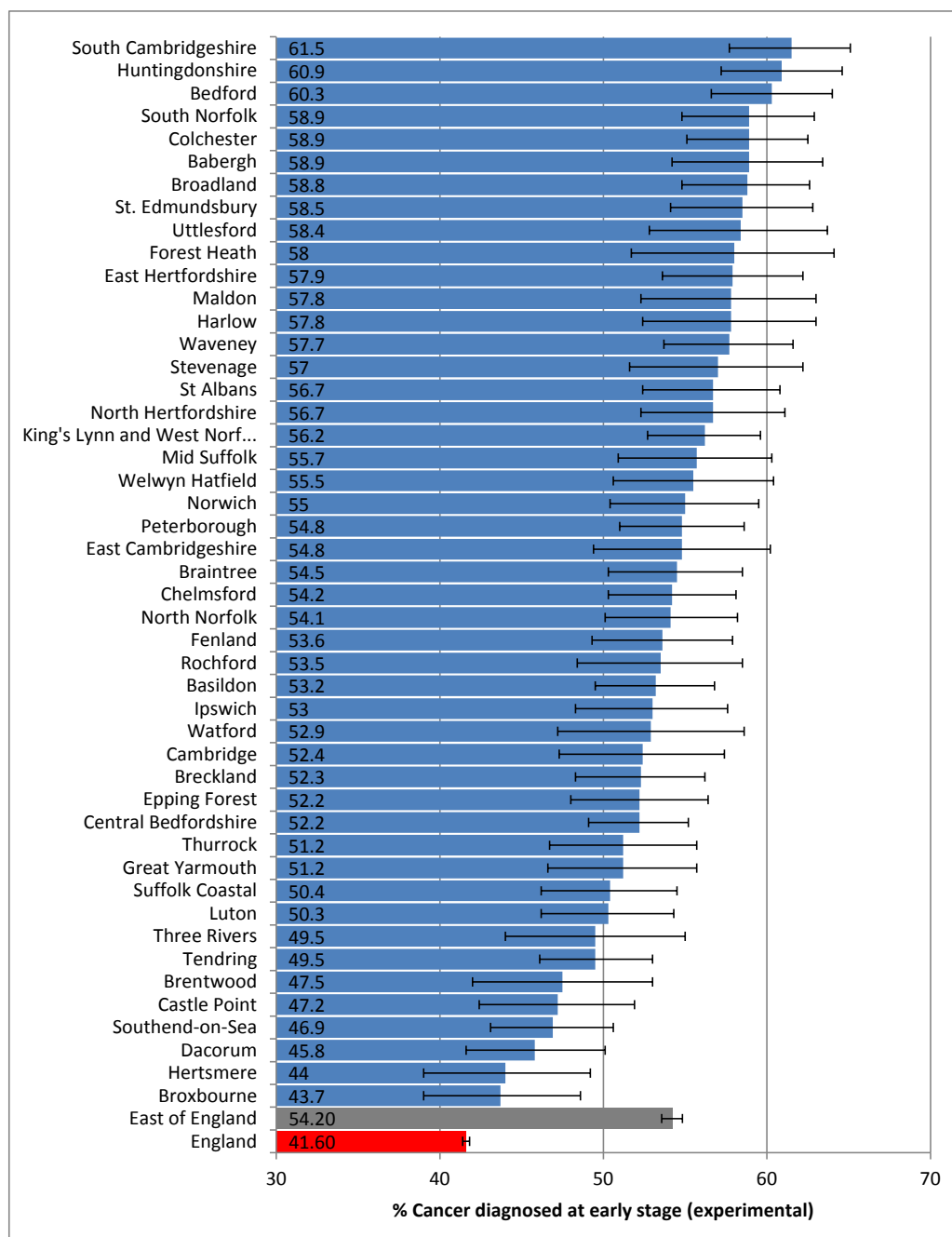
Public Health England have published experimental statistics which shows the proportion of new cases of cancer diagnosed at an early stage³ in 2012. They are labelled as experimental statistics because variation in completeness of staging is a large contributor to overall variation. East of England staging information is better than the rest of the country hence average early

³ Proportion of registered cancers with good staging info (invasive malignancies of breast, prostate, colorectal, lung, bladder, kidney, ovary, uterus, non-Hodgkin lymphomas, and invasive melanomas of skin) diagnosed at stage 1&2

stage diagnosis is observed to be higher than the national average and any variation more likely due to actual variation in when cancers are diagnosed.

The National CCG outcome indicator will be calculated using a similar methodology and is due for publication in June 2014. For now, the experimental statistics are only available by local authority but can be considered a proxy for the forthcoming CCG indicator.

There is significant variation from 61.49% in South Cambridgeshire (the best nationally) to 43.7% in Broxbourne, the lowest percentage nationally is 33.86%.



Source: <http://www.phoutcomes.info/search/cancer#gid/1/pat/6/ati/101/page/3/par/E1200006/are/E06000055>

Cancer waits performance

The cancer waiting times standards where performance is tracked are:

- 2 week wait - from the receipt of all suspected cancer referrals by hospital to first out patients appointment;
- 2 week breast symptom – as above but from the receipt of referrals with breast symptoms where cancer is not initially suspected;
- 31 day standard – from decision to treat to first definitive treatment;
- 31 day subsequent – cancer waiting times standards have now been extended to cover subsequent anti-cancer drug and surgical treatments;
- 62 day standard – from receipt of urgent referral to first definitive treatment;
- 62 day screening – patients referred by an NHS cancer screening programme - referral to first definitive treatment; and
- 62 day upgrade - refers to patients treated for cancer who were not originally referred via an urgent GP referral but have been seen by a clinician who suspects cancer and has upgraded to a priority status, prior to diagnosis. There is no operating standard for this area as yet; hence no risk rating is applied in the table below.

Cancer waits data is uploaded by trusts to a database called Open Exeter. The East of England SCN is able to access anonymised reports from this database that allow measurement of performance. Cancer waits targets apply to the 'All Cancers' total, but to help identify pathways which are responsible for breaches red and green has been used at the tumour site level. Consecutive quarterly breaches since Q1 2013/14 are shown in brackets on the summary table, 2WW and 31 day table.

Cancer waits performance is also reported by NHS England:

<http://www.england.nhs.uk/statistics/cancer-waiting-times/>

The national cancer waiting times website also provide commentary each quarter on national performance.

Cancer Waits Summary Table

Summary Table Quarter 4 2013/14 (28 breaches)	Cancer Two Week Wait.	Breast Symptom Two Week Wait	31 Day First Treatmen t (All)	31 Day Subsequ ent Treatmen t (drug)	31 Day Subsequ ent Treatmen ts (Surgery)	31 Day Subsequ ent Treatmen ts (RT)	31 Day Subsequ ent Tx (Drug & surgery)	Cancer Plan 62 Day Standard (All Treatmen ts)	CRS 62 Day Screenin g Standard (All Treatmen ts)	CRS 62 Day Upgrade Standard (All Treatmen ts)	31 Day Subsequ ent Treatmen t (Other)	31 Day Subsequ ent Treatmen t (Palliati ve)	Cancer plan 31 Day Rare Cancer Standard
Basildon and Thurrock	95.1%	96.6%	99.7%	100.0%	96.2%	-	97.9%	(2) 83.0%	65.4%	85.7%	-	100.0%	-
Bedford Hospital NHS Trust	93.8%	89.4%	100.0%	100.0%	100.0%	100.0%	100.0%	88.6%	100.0%	81.8%	100.0%	100.0%	100.0%
Cambridge University Hosp	96.9%	96.0%	98.0%	100.0%	92.6%	97.7%	96.5%	(2) 83.7%	94.4%	94.3%	100.0%	100.0%	100.0%
Colchester Hospital University	94.5%	(2) 88.3%	(3) 92.2%	98.5%	(2) 85.4%	97.9%	95.1%	(3) 78.4%	95.3%	91.8%	100.0%	100.0%	50.0%
East and North Hertfordshire	97.9%	96.0%	97.0%	98.4%	94.1%	96.5%	97.2%	86.3%	96.6%	69.2%	100.0%	100.0%	100.0%
Hinchingbrooke Health Care	98.3%	95.6%	98.6%	100.0%	100.0%	-	100.0%	85.7%	92.9%	100.0%	-	100.0%	100.0%
Ipswich Hospital	97.7%	96.9%	98.9%	100.0%	98.5%	96.7%	99.6%	81.1%	95.4%	94.0%	100.0%	100.0%	100.0%
James Paget University Hosp	96.4%	97.7%	100.0%	100.0%	100.0%	-	100.0%	84.4%	97.1%	100.0%	100.0%	100.0%	-
Kettering General Hospital	95.6%	97.2%	99.3%	100.0%	100.0%	100.0%	100.0%	81.7%	87.7%	78.6%	100.0%	100.0%	100.0%
Luton and Dunstable Uni	97.8%	97.4%	100.0%	100.0%	100.0%	-	100.0%	87.2%	96.9%	88.9%	100.0%	100.0%	100.0%
Mid Essex Hospital Services	95.9%	97.0%	98.1%	99.3%	96.2%	-	98.0%	79.9%	100.0%	81.8%	100.0%	100.0%	50.0%
Milton Keynes Hospital	96.2%	93.1%	96.1%	100.0%	100.0%	100.0%	100.0%	77.5%	87.0%	100.0%	-	100.0%	-
Norfolk & Norwich Uni. Hosp	95.9%	95.7%	97.7%	100.0%	96.0%	97.5%	98.4%	85.1%	92.9%	86.4%	97.6%	100.0%	100.0%
Norfolk PCT	-	-	100.0%	-	-	-	-	91.7%	-	-	-	-	-
Northampton General Hosp	92.7%	81.9%	93.6%	97.8%	88.9%	98.8%	95.0%	78.1%	96.8%	96.8%	66.7%	100.0%	0.0%
Northamptonshire Healthcare	-	-	-	-	-	-	-	-	-	-	-	-	-
Papworth Hospital NHS FT	-	-	100.0%	-	100.0%	-	100.0%	90.0%	-	-	100.0%	-	-
Peterborough & Stamford H	97.3%	98.8%	99.7%	100.0%	98.0%	100.0%	99.3%	88.9%	91.7%	100.0%	-	100.0%	100.0%
Southend University Hospital	94.3%	89.2%	98.5%	99.7%	97.2%	99.7%	99.2%	(2) 81.3%	90.9%	100.0%	100.0%	100.0%	66.7%
The Princess Alexandra Hosp	94.3%	(2) 91.8%	98.5%	100.0%	100.0%	-	100.0%	77.3%	95.0%	94.1%	-	100.0%	100.0%
The QEH, King's Lynn	98.7%	95.0%	98.3%	100.0%	100.0%	-	100.0%	78.9%	100.0%	100.0%	-	100.0%	100.0%
West Hertfordshire Hospitals	94.4%	(3) 89.5%	96.9%	100.0%	95.5%	-	96.5%	86.0%	95.8%	85.7%	-	100.0%	100.0%
West Suffolk NHS FT	98.5%	99.0%	100.0%	100.0%	100.0%	-	100.0%	91.6%	98.3%	86.4%	-	100.0%	100.0%
Anglia Cancer Network	96.9%	96.3%	98.7%	100.0%	96.2%	97.8%	98.6%	85.2%	95.0%	7.7%	98.6%	100.0%	-
Essex Cancer Network	95.0%	92.6%	96.9%	99.3%	94.4%	98.7%	97.9%	(2) 80.5%	91.7%	89.8%	100.0%	100.0%	-
Mount Vernon CN	96.4%	94.1%	97.8%	98.9%	96.3%	96.5%	98.0%	86.5%	96.6%	79.3%	100.0%	100.0%	-
East of England SCN	96.3%	94.7%	98.1%	99.6%	95.9%	97.6%	98.4%	84.2%	94.6%	90.8%	99.2%	100.0%	-
Anglia Area Team	96.9%	96.3%	98.7%	100.0%	96.2%	97.8%	98.6%	85.2%	95.0%	92.3%	98.6%	100.0%	-
Essex Area Team	94.8%	92.5%	97.1%	99.4%	95.0%	98.7%	98.0%	80.0%	92.0%	92.7%	100.0%	100.0%	-
Herts & South Midlands AT	95.6%	93.0%	97.0%	98.9%	95.0%	97.0%	97.8%	82.8%	94.2%	86.7%	97.7%	100.0%	-
National Performance	95	93.9	98	99.6	96.8	97.1		84.2	94.2	92	98.1	100.0	92.2
Operating Standard	93.0%	93.0%	96.0%	98.0%	94.0%	94.0%		85.0%	90.0%				

Summary Table Quarter 3 2013/14 (16 breaches)	Cancer Two Week Wait.	Breast Symptom Two Week Wait	31 Day First Treatment (All)	31 Day Subsequ ent Treatmen t (drug)	31 Day Subsequ ent Treatmen ts (Surgery)	31 Day Subsequ ent Treatmen ts (RT)	31 Day Subsequ ent Tx (Drug & surgery)	Cancer Plan 62 Day Standard (All Treatmen ts)	CRS 62 Day Screenin g Standard (All Treatmen ts)	CRS 62 Day Upgrade Standard (All Treatmen ts)	31 Day Subsequ ent Treatmen t (Other)	31 Day Subsequ ent Treatmen t (Palliative)	Cancer plan 31 Day Rare Cancer Standard
Basildon and Thurrock	96.0%	98.2%	100.0%	100.0%	100.0%	100.0%	100.0%	82.8%	90.9%	87.0%	-	100.0%	100.0%
Bedford Hospital NHS Trust	94.5%	94.7%	100.0%	100.0%	100.0%	100.0%	100.0%	91.4%	95.5%	92.3%	100.0%	100.0%	-
Cambridge University Hosp	97.2%	97.1%	97.0%	100.0%	95.0%	97.3%	97.6%	83.7%	89.5%	76.7%	100.0%	100.0%	100.0%
Colchester Hospital University	95.9%	91.9%	95.5%	100.0%	92.2%	98.4%	98.0%	80.1%	89.6%	90.9%	-	100.0%	50.0%
East and North Hertfordshire	97.9%	96.0%	96.9%	98.6%	96.4%	97.3%	98.0%	85.4%	93.3%	84.2%	100.0%	100.0%	100.0%
Hinchingbrooke Health Care	98.5%	98.1%	99.3%	100.0%	96.0%	-	98.7%	86.6%	100.0%	0.0%	-	100.0%	-
Ipswich Hospital	97.1%	97.5%	99.2%	98.9%	100.0%	99.6%	99.3%	88.5%	93.3%	94.4%	100.0%	100.0%	100.0%
James Paget University Hosp	97.0%	97.9%	100.0%	100.0%	100.0%	-	100.0%	94.1%	100.0%	100.0%	-	100.0%	-
Kettering General Hospital	95.7%	99.0%	100.0%	100.0%	100.0%	-	100.0%	87.6%	97.0%	94.7%	-	100.0%	100.0%
Luton and Dunstable Uni	95.8%	95.2%	99.5%	100.0%	100.0%	-	100.0%	92.3%	97.0%	71.4%	100.0%	100.0%	100.0%
Mid Essex Hospital Services	95.9%	95.6%	99.1%	100.0%	99.1%	-	99.6%	79.5%	93.3%	100.0%	-	100.0%	100.0%
Milton Keynes Hospital	96.2%	98.1%	98.1%	100.0%	95.0%	100.0%	98.3%	89.8%	95.8%	66.7%	-	100.0%	100.0%
Norfolk & Norwich Uni. Hosp	96.9%	96.0%	97.4%	100.0%	89.8%	98.2%	95.9%	85.0%	97.7%	80.4%	100.0%	100.0%	100.0%
Norfolk PCT	-	-	100.0%	-	-	-	-	96.4%	-	-	-	-	-
Northampton General Hosp	96.6%	99.5%	98.6%	100.0%	100.0%	97.1%	100.0%	85.6%	98.1%	82.1%	-	100.0%	100.0%
Northamptonshire Healthcare	-	-	-	-	-	-	-	-	-	-	-	-	-
Papworth Hospital NHS FT	-	-	100.0%	-	100.0%	-	100.0%	72.7%	-	100.0%	100.0%	-	-
Peterborough & Stamford H	97.0%	98.2%	100.0%	100.0%	100.0%	99.5%	100.0%	89.5%	96.0%	97.4%	100.0%	100.0%	100.0%
Southend University Hospital	95.3%	97.4%	99.2%	99.1%	98.5%	97.0%	99.0%	81.5%	95.9%	60.0%	100.0%	100.0%	100.0%
The Princess Alexandra Hosp	93.1%	92.3%	98.8%	100.0%	92.9%	100.0%	96.6%	86.2%	95.7%	97.0%	-	100.0%	100.0%
The QEH, King's Lynn	97.1%	98.4%	99.4%	99.3%	100.0%	-	99.5%	87.9%	100.0%	100.0%	-	100.0%	50.0%
West Hertfordshire Hospitals	97.8%	95.1%	97.6%	100.0%	96.6%	100.0%	97.4%	84.6%	87.3%	100.0%	-	100.0%	100.0%
West Suffolk NHS FT	98.5%	96.9%	100.0%	100.0%	100.0%	-	100.0%	88.6%	98.3%	82.6%	100.0%	100.0%	100.0%
Anglia Cancer Network	97.0%	97.1%	98.6%	99.8%	94.9%	98.2%	98.1%	87.6%	95.5%	10.2%	100.0%	100.0%	-
Essex Cancer Network	95.8%	95.3%	98.2%	99.6%	97.3%	97.9%	98.9%	80.7%	92.7%	87.8%	100.0%	100.0%	-
Mount Vernon CN	97.3%	95.5%	97.8%	99.1%	97.6%	97.3%	98.6%	87.1%	94.7%	82.1%	100.0%	100.0%	-
East of England SCN	96.8%	96.2%	98.4%	99.6%	95.9%	97.9%	98.3%	86.0%	94.5%	88.9%	100.0%	100.0%	-
Anglia Area Team	97.0%	97.1%	98.6%	99.8%	94.9%	98.2%	98.1%	87.6%	95.5%	89.8%	100.0%	100.0%	-
Essex Area Team	95.3%	94.7%	98.3%	99.6%	96.9%	97.9%	98.8%	81.5%	93.1%	95.3%	100.0%	100.0%	-
Herts & South Midlands AT	96.8%	96.6%	98.3%	99.5%	98.0%	97.2%	99.0%	87.1%	95.6%	84.6%	100.0%	100.0%	-
National Performance	95.6	95.5	98.3	99.8	97	97.2		85.6	94.5	92.1	98.5	100.0	93.1
Operating Standard	93.0%	93.0%	96.0%	98.0%	94.0%	94.0%		85.0%	90.0%				

Summary Table Quarter 2 2013/14 (10 breaches)	Cancer Two Week Wait.	Breast Symptom Two Week Wait	31 Day First Treatment (All)	31 Day Subsequent Treatment (drug)	31 Day Subsequent Treatments (Surgery)	31 Day Subsequent Treatments (RT)	31 Day Subsequent Tx (Drug & surgery)	Cancer Plan 62 Day Standard (All Treatments)	CRS 62 Day Screening Standard (All Treatments)	CRS 62 Day Upgrade Standard (All Treatments)	31 Day Subsequent Treatment (Other)	31 Day Subsequent Treatment (Palliative)	Cancer plan 31 Day Rare Cancer Standard
Basildon and Thurrock	95.8%	97.0%	99.7%	100.0%	100.0%	100.0%	100.0%	88.0%	93.9%	100.0%	-	100.0%	-
Bedford Hospital NHS Trust	93.6%	94.3%	99.7%	100.0%	100.0%	100.0%	100.0%	90.4%	100.0%	100.0%	-	100.0%	100.0%
Cambridge University Hosp	96.9%	94.2%	98.1%	100.0%	95.9%	96.8%	97.9%	85.0%	92.7%	97.7%	100.0%	100.0%	100.0%
Colchester Hospital University	98.4%	93.7%	95.9%	100.0%	95.1%	96.5%	98.6%	83.2%	97.9%	90.5%	-	100.0%	100.0%
East and North Hertfordshire	97.6%	95.8%	98.6%	98.9%	97.1%	99.4%	98.5%	86.0%	84.8%	92.3%	100.0%	100.0%	100.0%
Hinchingbrooke Health Care	99.0%	98.8%	99.4%	100.0%	100.0%	100.0%	100.0%	91.5%	90.9%	60.0%	-	100.0%	100.0%
Ipswich Hospital	95.9%	94.0%	99.1%	100.0%	100.0%	97.6%	100.0%	89.3%	93.9%	95.5%	100.0%	100.0%	100.0%
James Paget University Hosp	98.2%	97.1%	100.0%	100.0%	100.0%	-	100.0%	92.2%	100.0%	100.0%	-	100.0%	100.0%
Kettering General Hospital	93.3%	95.6%	99.7%	100.0%	100.0%	100.0%	100.0%	86.7%	93.1%	76.9%	100.0%	100.0%	50.0%
Luton and Dunstable Uni	94.8%	94.8%	100.0%	100.0%	100.0%	-	100.0%	91.8%	96.5%	50.0%	100.0%	100.0%	-
Mid Essex Hospital Services	98.5%	98.2%	99.5%	100.0%	100.0%	-	100.0%	87.2%	97.4%	100.0%	-	100.0%	100.0%
Milton Keynes Hospital	96.5%	94.2%	98.4%	100.0%	100.0%	100.0%	100.0%	87.4%	91.9%	80.0%	-	-	100.0%
Norfolk & Norwich Uni. Hosp	96.3%	93.9%	96.1%	100.0%	94.0%	98.9%	97.5%	85.2%	93.9%	77.3%	97.8%	100.0%	100.0%
Norfolk PCT	-	-	100.0%	-	-	-	-	98.3%	-	-	-	-	-
Northampton General Hosp	95.7%	99.6%	97.8%	100.0%	98.1%	97.3%	99.5%	83.3%	98.7%	71.4%	100.0%	100.0%	100.0%
Northamptonshire Healthcare	-	-	100.0%	-	-	-	-	0.0%	-	100.0%	-	-	-
Papworth Hospital NHS FT	100.0%	-	100.0%	-	100.0%	-	100.0%	76.7%	-	100.0%	100.0%	-	-
Peterborough & Stamford H	97.5%	96.0%	100.0%	100.0%	100.0%	99.5%	100.0%	90.0%	91.8%	95.3%	-	100.0%	100.0%
Southend University Hospital	95.6%	96.1%	98.3%	100.0%	94.5%	98.3%	99.2%	85.6%	100.0%	100.0%	100.0%	100.0%	-
The Princess Alexandra Hosp	93.4%	94.3%	98.9%	97.8%	97.0%	-	97.4%	85.1%	94.9%	96.2%	-	100.0%	50.0%
The QEH, King's Lynn	98.2%	98.3%	98.1%	100.0%	97.0%	-	99.1%	87.8%	100.0%	100.0%	-	100.0%	-
West Hertfordshire Hospitals	96.0%	91.5%	97.9%	100.0%	100.0%	-	100.0%	88.7%	84.7%	85.7%	100.0%	100.0%	100.0%
West Suffolk NHS FT	97.7%	98.6%	100.0%	100.0%	100.0%	-	100.0%	89.1%	100.0%	95.2%	-	100.0%	100.0%
Anglia Cancer Network	96.9%	95.6%	98.4%	100.0%	96.5%	97.9%	98.7%	88.2%	95.1%	5.9%	98.7%	100.0%	-
Essex Cancer Network	97.2%	96.1%	98.2%	100.0%	97.7%	97.3%	99.3%	85.9%	98.0%	96.7%	100.0%	100.0%	-
Mount Vernon CN	96.3%	94.1%	98.8%	99.2%	98.7%	99.4%	99.1%	88.4%	91.9%	84.6%	100.0%	100.0%	-
East of England SCN	96.9%	95.4%	98.4%	99.9%	97.1%	98.2%	98.9%	87.7%	95.2%	93.6%	99.1%	100.0%	-
Anglia Area Team	96.9%	95.6%	98.4%	100.0%	96.5%	97.9%	98.7%	88.2%	95.1%	94.1%	98.7%	100.0%	-
Essex Area Team	96.5%	95.7%	98.3%	99.9%	97.6%	97.3%	99.2%	85.8%	97.7%	96.3%	100.0%	100.0%	-
Herts & South Midlands AT	95.7%	95.0%	98.7%	99.6%	98.8%	98.8%	99.4%	87.0%	93.4%	79.7%	100.0%	100.0%	-
National Performance	95.2	94.4	98.5	99.7	97.6	98.1		86.7	94.9	92.7	97.1	100.0	90.5
Operating Standard	93.0%	93.0%	96.0%	98.0%	94.0%	94.0%		85.0%	90.0%				

Summary Table Quarter 1 2013/14 (14 breaches)	Cancer Two Week Wait.	Breast Symptom Two Week Wait	31 Day First Treatment (All)	31 Day Subsequ ent Treatmen t (drug)	31 Day Subsequ ent Treatmen ts (Surgery)	31 Day Subsequ ent Treatmen ts (RT)	31 Day Subsequ ent Tx (Drug & surgery)	Cancer Plan 62 Day Standard (All Treatmen ts)	CRS 62 Day Screenin g Standard (All Treatmen ts)	CRS 62 Day Upgrade Standard (All Treatmen ts)	31 Day Subsequ ent Treatmen t (Other)	31 Day Subsequ ent Treatmen t (Palliative)	Cancer plan 31 Day Rare Cancer Standard
Basildon and Thurrock	95.9%	98.5%	99.7%	100.0%	100.0%	100.0%	100.0%	87.6%	100.0%	100.0%	-	100.0%	100.0%
Bedford Hospital NHS Trust	93.8%	94.1%	99.3%	100.0%	100.0%	100.0%	100.0%	83.0%	100.0%	92.6%	100.0%	100.0%	100.0%
Cambridge University Hosp	96.9%	94.3%	97.4%	100.0%	97.7%	94.6%	98.9%	86.9%	92.2%	93.9%	87.5%	100.0%	100.0%
Colchester Hospital University	95.8%	96.1%	98.5%	100.0%	97.3%	98.4%	99.4%	90.0%	90.5%	71.4%	-	100.0%	100.0%
East and North Hertfordshire	97.9%	97.5%	97.6%	99.0%	99.0%	97.1%	99.0%	85.5%	94.7%	87.5%	100.0%	100.0%	100.0%
Hinchingbrooke Health Care	97.9%	97.8%	96.0%	100.0%	100.0%	-	100.0%	89.7%	100.0%	100.0%	100.0%	100.0%	100.0%
Ipswich Hospital	95.6%	89.7%	99.4%	99.3%	98.5%	99.1%	99.1%	87.8%	100.0%	95.2%	100.0%	100.0%	100.0%
James Paget University Hosp	96.7%	96.1%	100.0%	100.0%	100.0%	-	100.0%	86.5%	98.1%	88.9%	100.0%	100.0%	100.0%
Kettering General Hospital	94.1%	99.5%	100.0%	100.0%	100.0%	-	100.0%	88.1%	91.3%	66.7%	100.0%	100.0%	-
Luton and Dunstable Uni	94.7%	93.5%	100.0%	100.0%	100.0%	-	100.0%	93.5%	98.9%	100.0%	100.0%	100.0%	-
Mid Essex Hospital Services	97.8%	99.8%	99.2%	100.0%	100.0%	-	100.0%	86.9%	89.5%	100.0%	100.0%	100.0%	100.0%
Milton Keynes Hospital	98.4%	93.0%	98.1%	100.0%	100.0%	100.0%	100.0%	90.4%	100.0%	0.0%	-	-	100.0%
Norfolk & Norwich Uni. Hosp	96.6%	96.4%	97.1%	100.0%	94.9%	98.8%	98.0%	85.7%	93.0%	90.0%	100.0%	100.0%	100.0%
Norfolk PCT	-	-	100.0%	-	-	-	-	91.4%	-	-	-	-	-
Northampton General Hosp	95.9%	100.0%	98.1%	99.4%	98.1%	97.7%	99.1%	82.0%	94.1%	64.7%	50.0%	100.0%	100.0%
Northamptonshire Healthcare	100.0%	-	-	-	-	-	-	-	-	-	-	-	-
Papworth Hospital NHS FT	-	-	93.3%	-	71.4%	-	71.4%	47.1%	-	0.0%	-	-	-
Peterborough & Stamford H	97.7%	98.3%	99.8%	100.0%	97.4%	100.0%	99.5%	89.6%	92.5%	94.4%	100.0%	100.0%	100.0%
Southend University Hospital	95.3%	94.2%	95.6%	98.9%	93.1%	98.7%	98.1%	83.1%	92.9%	100.0%	100.0%	100.0%	100.0%
The Princess Alexandra Hosp	95.0%	93.7%	99.5%	100.0%	100.0%	100.0%	100.0%	84.9%	97.7%	94.9%	-	100.0%	100.0%
The QEH, King's Lynn	97.7%	98.9%	99.3%	98.9%	100.0%	-	99.2%	87.6%	95.5%	71.4%	-	100.0%	100.0%
West Hertfordshire Hospitals	95.5%	91.2%	98.1%	100.0%	100.0%	-	100.0%	85.8%	93.7%	50.0%	-	100.0%	100.0%
West Suffolk NHS FT	94.4%	98.1%	99.7%	100.0%	100.0%	-	100.0%	92.4%	96.9%	100.0%	100.0%	100.0%	100.0%
Anglia Cancer Network	96.4%	96.1%	98.4%	99.8%	97.2%	97.1%	98.9%	87.3%	95.6%	6.9%	98.1%	100.0%	-
Essex Cancer Network	96.2%	96.9%	98.1%	99.5%	97.8%	98.5%	99.0%	87.2%	91.6%	92.9%	100.0%	100.0%	-
Mount Vernon CN	96.2%	94.0%	98.3%	99.3%	99.6%	97.1%	99.4%	87.7%	96.9%	88.1%	100.0%	100.0%	-
East of England SCN	96.3%	95.8%	98.3%	99.6%	97.7%	97.4%	99.0%	87.3%	95.0%	92.4%	98.9%	100.0%	-
Anglia Area Team	96.4%	96.1%	98.4%	99.8%	97.2%	97.1%	98.9%	87.3%	95.6%	93.1%	98.1%	100.0%	-
Essex Area Team	96.0%	96.3%	98.3%	99.5%	98.0%	98.6%	99.1%	86.9%	92.5%	94.6%	100.0%	100.0%	-
Herts & South Midlands AT	96.1%	95.2%	98.5%	99.4%	99.4%	97.3%	99.4%	86.7%	95.7%	76.5%	96.8%	100.0%	-
National Performance	95.5	95.4	98.3	99.7	99.7	97.9		86.8	95.2	92.6	96.1	100.0	93.4
Operating Standard	93.0%	93.0%	96.0%	98.0%	94.0%	94.0%		85.0%	90.0%				

Two week wait performance

% meeting 2 week wait target (red = below 93% all cancer operating target)

Two week wait Q4	Breast	Brain/Ce ntral Nervous System	Children' s	Gynaecol ogical	Haematol ogical	Head & Neck	Lower Gastroint estinal	Lung	Other	Sarcoma	Skin	Testicular	Upper Gastroint estinal	Urologica l	Acute leukaemi a	All Cancers
Basildon and Thurrock	96.2%	100.0%	95.0%	96.5%	100.0%	98.1%	93.9%	99.0%	85.7%	100.0%	95.5%	100.0%	(3) 91.8%	89.5%	-	95.1%
Bedford Hospital NHS Trust	90.9%	92.3%	100.0%	95.7%	100.0%	98.3%	96.1%	94.6%	100.0%	100.0%	93.5%	100.0%	92.6%	93.1%	-	93.8%
Cambridge University Hosp	98.1%	-	100.0%	92.9%	-	99.0%	99.0%	97.4%	-	94.4%	94.3%	100.0%	99.5%	97.4%	-	96.9%
Colchester Hospital University	94.6%	-	100.0%	100.0%	100.0%	96.3%	(2) 90.0%	97.6%	(2) 50.0%	-	97.4%	100.0%	91.2%	(2) 91.0%	-	94.5%
East and North Hertfordshire	98.9%	100.0%	-	92.7%	100.0%	99.5%	97.9%	98.8%	-	-	99.2%	-	97.8%	96.8%	-	97.9%
Hinchingbrooke Health Care	99.2%	100.0%	100.0%	99.4%	92.3%	98.9%	100.0%	97.1%	100.0%	-	95.0%	100.0%	95.2%	97.7%	-	98.3%
Ipswich Hospital	98.8%	85.7%	100.0%	98.9%	93.8%	99.1%	98.4%	99.0%	-	100.0%	97.8%	91.3%	94.8%	95.4%	100.0%	97.7%
James Paget University Hosp	99.2%	-	80.0%	98.6%	100.0%	100.0%	99.3%	92.6%	-	-	100.0%	90.0%	84.4%	94.0%	-	96.4%
Kettering General Hospital	98.5%	-	90.9%	97.5%	100.0%	97.2%	96.3%	97.4%	-	88.9%	91.2%	100.0%	91.1%	94.4%	-	95.6%
Luton and Dunstable Uni	99.7%	100.0%	100.0%	97.8%	100.0%	100.0%	99.6%	100.0%	100.0%	-	97.4%	100.0%	(4) 88.9%	96.3%	-	97.8%
Mid Essex Hospital Services	98.7%	100.0%	94.4%	97.0%	100.0%	92.5%	96.2%	98.7%	80.0%	-	94.2%	100.0%	92.2%	98.4%	-	95.9%
Milton Keynes Hospital	97.5%	100.0%	90.9%	96.7%	100.0%	100.0%	95.1%	96.8%	100.0%	-	96.2%	100.0%	94.4%	(2) 92.5%	-	96.2%
Norfolk & Norwich Uni. Hosp	97.3%	95.0%	100.0%	95.6%	100.0%	97.0%	97.6%	98.0%	-	97.8%	94.3%	100.0%	99.2%	92.2%	-	95.9%
Norfolk PCT	-	-	-	-	-	-	-	-	-	-	-	-	-	-	-	-
Northampton General Hosp	90.0%	90.0%	100.0%	95.5%	100.0%	95.8%	93.0%	93.5%	-	86.7%	96.2%	50.0%	89.9%	91.2%	-	92.7%
Northamptonshire Healthcare	-	-	-	-	-	-	-	-	-	-	-	-	-	-	-	-
Papworth Hospital NHS FT	-	-	-	-	-	-	-	-	-	-	-	-	-	-	-	-
Peterborough & Stamford H	98.8%	100.0%	92.9%	98.7%	100.0%	95.3%	97.3%	97.9%	100.0%	-	99.7%	100.0%	(2) 90.8%	96.7%	-	97.3%
Southend University Hospital	95.8%	100.0%	100.0%	94.5%	96.4%	93.2%	93.3%	95.0%	100.0%	100.0%	50.0%	100.0%	95.8%	91.4%	-	94.3%
The Princess Alexandra Hosp	96.8%	100.0%	100.0%	90.7%	100.0%	96.5%	93.8%	100.0%	-	-	95.3%	100.0%	(4) 85.0%	93.8%	100.0%	94.3%
The QEH, King's Lynn	99.3%	100.0%	100.0%	97.5%	100.0%	99.2%	96.4%	100.0%	-	100.0%	98.6%	100.0%	100.0%	99.6%	-	98.7%
West Hertfordshire Hospitals	91.9%	(2) 66.7%	100.0%	94.9%	95.7%	94.5%	94.1%	96.8%	-	-	94.8%	100.0%	97.3%	95.4%	-	94.4%
West Suffolk NHS FT	99.2%	-	83.3%	99.2%	-	98.1%	98.8%	96.2%	-	-	99.0%	100.0%	95.5%	99.2%	-	98.5%
Anglia Cancer Network	97.8%	96.1%	95.5%	97.0%	97.8%	98.0%	98.0%	97.5%	100.0%	96.4%	96.3%	97.4%	94.9%	95.6%	100.0%	96.9%
Essex Cancer Network	96.1%	100.0%	96.8%	97.1%	98.7%	94.8%	92.9%	97.5%	80.0%	100.0%	95.8%	100.0%	92.6%	93.2%	-	95.0%
Mount Vernon CN	96.2%	85.7%	100.0%	94.8%	98.3%	97.6%	96.8%	98.4%	100.0%	-	96.9%	100.0%	94.5%	96.1%	-	96.4%
East of England SCN	97.1%	95.5%	96.8%	96.6%	98.2%	97.1%	96.4%	97.7%	95.0%	97.1%	96.2%	98.0%	94.3%	95.1%	100.0%	96.3%
Anglia Area Team	97.8%	96.1%	95.5%	97.0%	97.8%	98.0%	98.0%	97.5%	100.0%	96.4%	96.3%	97.4%	94.9%	95.6%	100.0%	96.9%
Essex Area Team	96.2%	100.0%	97.1%	96.1%	99.0%	95.0%	93.1%	98.0%	80.0%	100.0%	95.7%	100.0%	(4) 91.3%	93.3%	100.0%	94.8%
Herts & South Midlands AT	95.8%	89.7%	96.5%	95.7%	98.9%	97.5%	95.8%	97.5%	100.0%	87.5%	96.0%	94.2%	92.7%	94.5%	-	95.6%
National Performance	95.9	-	96.9	95.2	-	95.8	94.7	96.7	-	95.5	95.2	97.2	93.3	93.9	-	95.0
Operating Standard	93.0%	93.0%	93.0%	93.0%	93.0%	93.0%	93.0%	93.0%	93.0%	93.0%	93.0%	93.0%	93.0%	93.0%	93.0%	93.0%

31 day performance

% meeting 31 day standard target (red = below 96% all cancer operating target)

31 day target Q4	Breast	Brain/Ce ntral Nervous System	Children' s	Gynaecol ogical	Haematol ogical	Head & Neck	Lower Gastroint estinal	Lung	Other	Sarcoma	Skin	Testicular n/a to 31 day standard	Upper Gastroint estinal	Urologica l	Acute leukaemi a n/a to 31 day standard	All Cancers
Basildon and Thurrock	100.0%	-	-	100.0%	100.0%	100.0%	100.0%	98.0%	100.0%	-	100.0%	-	100.0%	100.0%	-	99.7%
Bedford Hospital NHS Trust	100.0%	-	-	100.0%	100.0%	100.0%	100.0%	100.0%	100.0%	100.0%	100.0%	-	100.0%	100.0%	-	100.0%
Cambridge University Hosp	100.0%	97.5%	100.0%	98.3%	100.0%	97.3%	98.3%	100.0%	100.0%	100.0%	(4) 94.7%	-	95.8%	98.1%	-	98.0%
Colchester Hospital University	98.8%	100.0%	100.0%	100.0%	97.7%	100.0%	96.5%	98.1%	100.0%	100.0%	85.2%	-	100.0%	(3) 82.3%	-	(3) 92.2%
East and North Hertfordshire	98.6%	100.0%	100.0%	100.0%	100.0%	96.0%	96.3%	100.0%	100.0%	100.0%	95.7%	-	96.8%	(2) 94.4%	-	97.0%
Hinchingbrooke Health Care	100.0%	-	-	100.0%	100.0%	100.0%	100.0%	100.0%	100.0%	-	(4) 95.2%	-	100.0%	97.1%	-	98.6%
Ipswich Hospital	100.0%	100.0%	-	100.0%	97.1%	100.0%	100.0%	100.0%	100.0%	100.0%	96.7%	-	100.0%	97.9%	-	98.9%
James Paget University Hosp	100.0%	-	-	100.0%	100.0%	100.0%	100.0%	100.0%	100.0%	100.0%	100.0%	-	100.0%	100.0%	-	100.0%
Kettering General Hospital	96.9%	-	100.0%	100.0%	100.0%	100.0%	100.0%	100.0%	100.0%	100.0%	100.0%	-	100.0%	100.0%	-	99.3%
Luton and Dunstable Uni	100.0%	-	-	100.0%	100.0%	100.0%	100.0%	100.0%	100.0%	100.0%	100.0%	-	100.0%	100.0%	-	100.0%
Mid Essex Hospital Services	100.0%	-	-	100.0%	100.0%	(2) 94.4%	96.6%	100.0%	100.0%	-	96.0%	-	100.0%	98.0%	-	98.1%
Milton Keynes Hospital	100.0%	-	-	83.3%	100.0%	(2) 50.0%	93.3%	100.0%	100.0%	100.0%	100.0%	-	100.0%	91.7%	-	96.1%
Norfolk & Norwich Uni. Hosp	99.3%	100.0%	-	(4) 93.1%	100.0%	(4) 78.0%	100.0%	99.0%	100.0%	100.0%	100.0%	-	100.0%	96.4%	-	97.7%
Norfolk PCT	-	-	-	-	-	-	-	-	-	-	-	-	-	100.0%	-	100.0%
Northampton General Hosp	78.5%	100.0%	-	97.5%	100.0%	95.0%	92.0%	100.0%	92.3%	-	(3) 92.2%	-	100.0%	98.9%	-	93.6%
Northamptonshire Healthcare	-	-	-	-	-	-	-	-	-	-	-	-	-	-	-	-
Papworth Hospital NHS FT	-	-	-	-	-	-	-	100.0%	-	100.0%	-	-	-	-	-	100.0%
Peterborough & Stamford H	100.0%	-	-	100.0%	100.0%	100.0%	100.0%	100.0%	100.0%	100.0%	98.3%	-	100.0%	100.0%	-	99.7%
Southend University Hospital	100.0%	100.0%	-	96.1%	100.0%	100.0%	100.0%	100.0%	100.0%	100.0%	100.0%	-	100.0%	95.5%	-	98.5%
The Princess Alexandra Hosp	98.1%	-	-	100.0%	96.9%	-	96.0%	100.0%	100.0%	-	100.0%	-	96.0%	100.0%	-	98.5%
The QEH, King's Lynn	100.0%	-	-	100.0%	100.0%	100.0%	100.0%	100.0%	100.0%	-	92.5%	-	100.0%	97.7%	-	98.3%
West Hertfordshire Hospitals	98.9%	-	-	96.9%	96.3%	100.0%	95.1%	100.0%	66.7%	-	(2) 90.5%	-	100.0%	100.0%	-	96.9%
West Suffolk NHS FT	100.0%	-	-	100.0%	100.0%	100.0%	100.0%	100.0%	100.0%	-	100.0%	-	100.0%	100.0%	-	100.0%
Anglia Cancer Network	99.8%	97.9%	100.0%	97.7%	99.7%	(4) 90.5%	99.8%	99.7%	100.0%	100.0%	97.8%	-	99.0%	98.4%	-	98.7%
Essex Cancer Network	99.7%	100.0%	100.0%	98.0%	99.2%	98.0%	98.5%	98.8%	100.0%	100.0%	94.7%	-	100.0%	(4) 92.1%	-	96.9%
Mount Vernon CN	99.2%	100.0%	100.0%	98.3%	98.5%	98.1%	97.0%	100.0%	95.2%	100.0%	(2) 95.3%	-	97.8%	97.2%	-	97.8%
East of England SCN	99.6%	98.2%	100.0%	97.9%	99.4%	(4) 94.2%	98.9%	99.5%	99.1%	100.0%	96.7%	-	99.0%	96.6%	-	98.1%
Anglia Area Team	99.8%	97.9%	100.0%	97.7%	99.7%	(4) 90.5%	99.8%	99.7%	100.0%	100.0%	97.8%	-	99.0%	98.4%	-	98.7%
Essex Area Team	99.4%	100.0%	100.0%	98.1%	98.8%	98.0%	98.2%	99.0%	100.0%	100.0%	95.3%	-	99.3%	(4) 93.2%	-	97.1%
Hertfordshire & South Midlands AT	95.3%	100.0%	100.0%	97.4%	99.3%	96.1%	96.1%	100.0%	94.9%	100.0%	95.7%	-	98.5%	97.6%	-	97.0%
National Performance	98.9	99.1	98.4	98.2	99.7	95.1	98.3	98.6	99.3	97.9	97.8	-	98.9	96.1	-	98.0
Operating Standard	96.0%	96.0%	96.0%	96.0%	96.0%	96.0%	96.0%	96.0%	96.0%	96.0%	96.0%	96.0%	96.0%	96.0%	96.0%	96.0%

62 day performance

% meeting 62 day standard target (red = below 85% all cancer operating target)

62 day target Q4	Breast	Brain/Ce ntral Nervous System	Children' s n/a to 62 day standard	Gynaecol ogical	Haematol ogical (Excludin g Acute Leukaemi a)	Head & Neck	Lower Gastroint estinal	Lung	Other	Sarcoma	Skin	Testicular n/a to 62 day standard	Upper Gastroint estinal	Urologica l (Excludin g Testicular)	Acute leukaemi a n/a to 62 day standard	All Cancers
Basildon and Thurrock	96.4%	-	-	57.1%	81.0%	60.0%	88.1%	61.2%	83.3%	0.0%	94.8%	-	71.4%	81.0%	-	83.0%
Bedford Hospital NHS Trust	96.0%	100.0%	-	71.4%	100.0%	100.0%	73.9%	84.0%	0.0%	100.0%	96.7%	-	100.0%	84.7%	-	88.6%
Cambridge University Hosp	97.8%	50.0%	-	84.0%	93.3%	56.4%	88.3%	87.8%	66.7%	83.3%	92.5%	-	73.1%	70.0%	-	83.7%
Colchester Hospital University	95.7%	-	-	90.5%	95.2%	80.0%	62.5%	89.3%	80.0%	-	86.3%	-	60.0%	69.9%	-	78.4%
East and North Hertfordshire	97.2%	-	-	75.9%	90.9%	94.4%	74.5%	95.2%	100.0%	100.0%	100.0%	-	86.7%	75.4%	-	86.3%
Hinchingbrooke Health Care	100.0%	-	-	92.9%	100.0%	0.0%	73.1%	100.0%	-	-	100.0%	-	44.4%	80.7%	-	85.7%
Ipswich Hospital	96.5%	-	-	86.2%	86.7%	28.6%	49.1%	69.2%	100.0%	0.0%	100.0%	-	70.8%	91.2%	-	81.1%
James Paget University Hosp	95.8%	-	-	76.0%	100.0%	72.7%	92.6%	64.7%	100.0%	-	100.0%	-	86.8%	67.8%	-	84.4%
Kettering General Hospital	92.0%	-	-	94.7%	66.7%	20.0%	87.2%	100.0%	100.0%	-	100.0%	-	75.0%	64.4%	-	81.7%
Luton and Dunstable Uni	100.0%	-	-	87.5%	57.1%	82.8%	83.8%	68.8%	100.0%	100.0%	100.0%	-	53.3%	89.0%	-	87.2%
Mid Essex Hospital Services	98.3%	-	-	88.2%	94.1%	82.4%	58.8%	65.2%	66.7%	-	90.7%	-	59.3%	71.0%	-	79.9%
Milton Keynes Hospital	96.7%	-	-	100.0%	100.0%	0.0%	42.9%	62.5%	100.0%	-	95.2%	-	33.3%	73.4%	-	77.5%
Norfolk & Norwich Uni. Hosp	90.9%	-	-	52.2%	88.9%	58.8%	78.2%	90.5%	100.0%	50.0%	98.3%	-	92.6%	89.7%	-	85.1%
Norfolk PCT	-	-	-	-	-	-	-	-	-	-	-	-	-	91.7%	-	91.7%
Northampton General Hosp	92.2%	-	-	97.1%	50.0%	41.7%	59.2%	75.8%	100.0%	-	93.5%	-	72.7%	73.2%	-	78.1%
Northamptonshire Healthcare	-	-	-	-	-	-	-	-	-	-	-	-	-	-	-	-
Papworth Hospital NHS FT	-	-	-	-	-	-	-	90.0%	-	-	-	-	-	-	-	90.0%
Peterborough & Stamford H	97.7%	0.0%	-	88.9%	100.0%	66.7%	78.9%	87.8%	100.0%	100.0%	96.9%	-	68.0%	86.9%	-	88.9%
Southend University Hospital	94.9%	-	-	80.7%	84.0%	87.5%	86.8%	86.5%	77.8%	100.0%	100.0%	-	60.0%	70.9%	-	81.3%
The Princess Alexandra Hosp	89.1%	-	-	100.0%	100.0%	75.0%	76.5%	78.9%	100.0%	-	94.9%	-	70.4%	56.5%	-	77.3%
The QEH, King's Lynn	100.0%	-	-	68.4%	33.3%	100.0%	72.7%	76.2%	80.0%	-	84.2%	-	87.5%	77.1%	-	78.9%
West Hertfordshire Hospitals	100.0%	-	-	87.2%	100.0%	71.4%	69.2%	55.0%	80.0%	-	95.1%	-	88.2%	77.8%	-	86.0%
West Suffolk NHS FT	100.0%	-	-	44.4%	77.8%	0.0%	73.3%	100.0%	-	-	95.6%	-	100.0%	95.9%	-	91.6%
Anglia Cancer Network	96.4%	50.0%	-	73.4%	86.7%	56.6%	75.2%	83.2%	89.5%	63.2%	95.8%	-	81.8%	84.1%	-	85.2%
Essex Cancer Network	96.2%	-	-	80.5%	88.1%	81.4%	74.5%	77.0%	78.6%	75.0%	91.3%	-	62.7%	72.2%	-	80.5%
Mount Vernon CN	98.9%	-	-	83.3%	84.3%	85.2%	76.4%	79.5%	95.2%	100.0%	98.1%	-	80.5%	80.2%	-	86.5%
East of England SCN	96.8%	50.0%	-	77.1%	86.7%	69.5%	75.2%	80.7%	87.4%	70.4%	94.9%	-	77.0%	80.3%	-	84.2%
Anglia Area Team	96.4%	50.0%	-	73.4%	86.7%	56.6%	75.2%	83.2%	89.5%	63.2%	95.8%	-	81.8%	84.1%	-	85.2%
Essex Area Team	95.0%	-	-	81.7%	90.4%	80.9%	74.7%	77.3%	80.6%	75.0%	91.7%	-	64.2%	69.8%	-	80.0%
Hertfordshire & South Midlands AT	95.9%	-	-	89.2%	77.8%	68.4%	69.4%	80.9%	96.4%	100.0%	97.0%	-	75.8%	75.2%	-	82.8%
National Performance	96.6	93.5	-	82.4	82.3	72.4	76.8	78.2	79.9	78.7	96.2	-	76.1	78.7	-	84.2
Operating Standard	85.0%	85.0%	85.0%	85.0%	85.0%	85.0%	85.0%	85.0%	85.0%	85.0%	85.0%	85.0%	85.0%	85.0%	85.0%	85.0%

Number of accountable breaches (red = below 85% all cancer operating target)

62 day target Q4	Breast	Brain/Ce ntral Nervous System	Children' s n/a to 62 day standard	Gynaecol ogical	Haematol ogical (Excludin g Acute Leukaemi a)	Head & Neck	Lower Gastroint estinal	Lung	Other	Sarcoma	Skin	Testicular n/a to 62 day standard	Upper Gastroint estinal	Urologica l (Excludin g Testicular)	Acute leukaemi a n/a to 62 day standard	All Cancers
Basildon and Thurrock	1.0	-	-	4.5	2.0	1.0	2.5	9.5	0.5	0.5	3.0	-	4.0	7.5	-	36.0
Bedford Hospital NHS Trust	1.0	-	-	2.0	-	-	3.0	2.0	1.0	-	1.0	-	-	7.5	-	17.5
Cambridge University Hosp	1.0	0.5	-	4.0	1.0	8.5	3.5	3.0	0.5	0.5	5.0	-	3.5	19.5	-	50.5
Colchester Hospital University	1.5	-	-	1.0	0.5	0.5	12.0	3.0	1.0	-	5.0	-	6.0	26.0	-	56.5
East and North Hertfordshire	1.0	-	-	3.5	1.0	0.5	6.0	1.0	-	-	-	-	3.0	14.5	-	30.5
Hinchingbrooke Health Care	-	-	-	0.5	-	1.0	3.5	-	-	-	-	-	2.5	5.5	-	13.0
Ipswich Hospital	1.0	-	-	2.0	2.0	2.5	14.5	8.0	-	1.0	-	-	9.5	5.0	-	45.5
James Paget University Hosp	1.0	-	-	3.0	-	1.5	1.0	3.0	-	-	-	-	2.5	9.5	-	21.5
Kettering General Hospital	2.0	-	-	0.5	3.0	2.0	2.5	-	-	-	-	-	1.5	16.0	-	27.5
Luton and Dunstable Uni	-	-	-	1.0	3.0	2.5	3.0	2.5	-	-	-	-	3.5	4.5	-	20.0
Mid Essex Hospital Services	0.5	-	-	2.0	0.5	1.5	3.5	4.0	0.5	-	4.0	-	5.5	21.0	-	43.0
Milton Keynes Hospital	1.0	-	-	-	-	2.5	8.0	3.0	-	-	0.5	-	2.0	8.5	-	25.5
Norfolk & Norwich Uni. Hosp	6.0	-	-	16.0	1.0	7.0	8.5	1.0	-	2.0	1.0	-	2.0	10.5	-	55.0
Norfolk PCT	-	-	-	-	-	-	-	-	-	-	-	-	-	2.0	-	2.0
Northampton General Hosp	4.0	-	-	0.5	4.0	3.5	14.5	4.0	-	-	2.0	-	4.5	16.5	-	53.5
Northamptonshire Healthcare	-	-	-	-	-	-	-	-	-	-	-	-	-	-	-	-
Papworth Hospital NHS FT	-	-	-	-	-	-	-	1.0	-	-	-	-	-	-	-	1.0
Peterborough & Stamford H	1.0	0.5	-	2.0	-	1.0	6.0	3.0	-	-	1.0	-	4.0	8.5	-	27.0
Southend University Hospital	2.0	-	-	5.5	2.0	1.0	2.5	2.5	1.0	-	-	-	5.0	16.0	-	37.5
The Princess Alexandra Hosp	3.0	-	-	-	-	0.5	2.0	4.0	-	-	1.0	-	4.0	20.0	-	34.5
The QEH, King's Lynn	-	-	-	3.0	6.0	-	4.5	2.5	0.5	-	3.0	-	1.0	13.5	-	34.0
West Hertfordshire Hospitals	-	-	-	2.5	-	1.0	4.0	4.5	0.5	-	1.5	-	1.0	7.0	-	22.0
West Suffolk NHS FT	-	-	-	2.5	2.0	1.5	4.0	-	-	-	1.0	-	-	2.0	-	13.0
Anglia Cancer Network	11.0	1.0	-	35.0	12.0	23.0	48.5	23.5	2.0	3.5	12.0	-	25.0	83.5	-	280.0
Essex Cancer Network	5.0	-	-	13.0	5.0	4.0	20.5	19.0	3.0	0.5	12.0	-	20.5	70.5	-	173.0
Mount Vernon CN	1.0	-	-	7.0	4.0	4.0	13.0	8.0	0.5	-	1.5	-	7.5	26.0	-	72.5
East of England SCN	17.0	1.0	-	55.0	21.0	31.0	82.0	50.5	5.5	4.0	25.5	-	53.0	180.0	-	525.5
Anglia Area Team	11.0	1.0	-	35.0	12.0	23.0	48.5	23.5	2.0	3.5	12.0	-	25.0	83.5	-	280.0
Essex Area Team	8.0	-	-	13.0	5.0	4.5	22.5	23.0	3.0	0.5	13.0	-	24.5	90.5	-	207.5
Hertfordshire & South Midlands AT	8.0	-	-	8.0	11.0	12.0	38.0	15.0	0.5	-	4.0	-	15.5	67.0	-	179.0

Impact on cancer waits of the Breast over 70 Be Clear on Cancer campaign

The Breast over 70 Be Clear on Cancer campaign ran from February 14 to March 30 2014. It led to a significant increase in 2WW referrals as seen in the following tables.

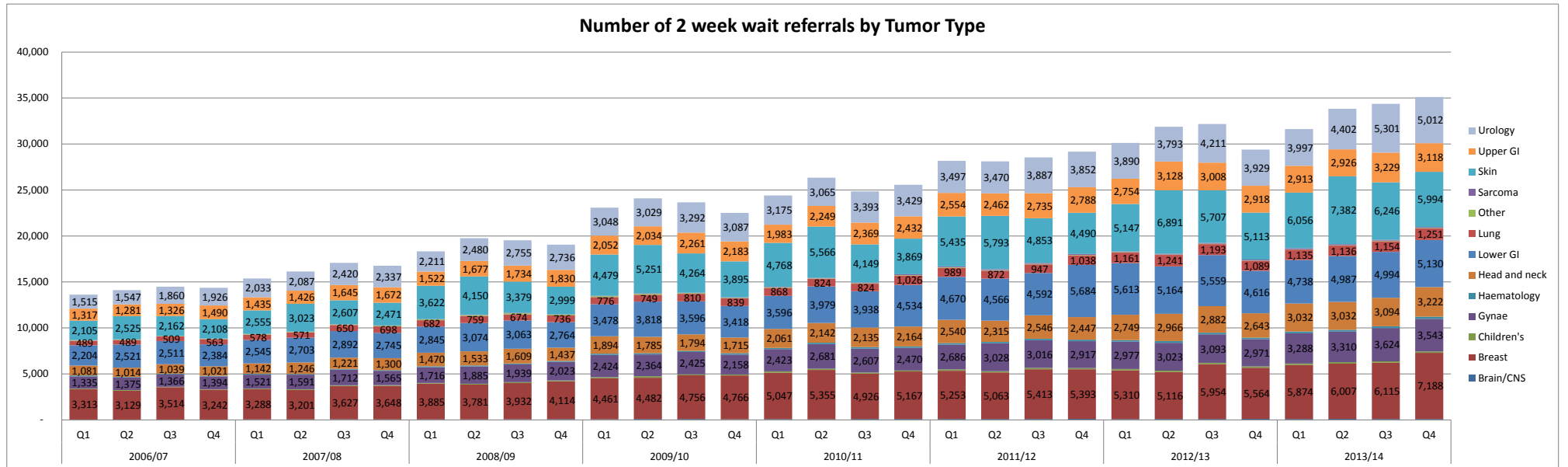
Suspected Breast Cancer 2 Week Wait	2013Apr/May/Jun			2013Jul/Aug/Sep			2013Oct/Nov/Dec			2014Jan/Feb/Mar			% inc latest Q compared to Q1-3
	Total seen by specialist	After 14 days	Performance	Total seen by specialist	After 14 days	Performance	Total seen by specialist	After 14 days	Performance	Total seen by specialist	After 14 days	Performance	
Basildon and Thurrock	446	10	97.8%	444	16	96.4%	500	11	97.8%	520	20	96.2%	12.2%
Bedford Hospital NHS Trust	315	25	92.1%	277	29	89.5%	313	18	94.2%	396	36	90.9%	31.3%
Cambridge University Hosp	603	17	97.2%	585	9	98.5%	602	8	98.7%	724	14	98.1%	21.3%
Colchester Hospital University	310	16	94.8%	338	11	96.7%	336	5	98.5%	441	24	94.6%	34.5%
East and North Hertfordshire	355	5	98.6%	393	8	98.0%	410	10	97.6%	468	5	98.9%	21.2%
Hinchingbrooke Health Care	226	2	99.1%	233	1	99.6%	188	2	98.9%	259	2	99.2%	20.1%
Ipswich Hospital	401	12	97.0%	447	9	98.0%	440	2	99.5%	510	6	98.8%	18.8%
James Paget University Hosp	339	13	96.2%	310	3	99.0%	324	11	96.6%	373	3	99.2%	15.0%
Kettering General Hospital	383	5	98.7%	425	15	96.5%	387	1	99.7%	464	7	98.5%	16.5%
Luton and Dunstable Uni	226	2	99.1%	304	5	98.4%	285	8	97.2%	329	1	99.7%	21.1%
Mid Essex Hospital Services	296	1	99.7%	252	-	100.0%	318	12	96.2%	311	4	98.7%	7.7%
Milton Keynes Hospital	340	4	98.8%	350	12	96.6%	420	10	97.6%	434	11	97.5%	17.3%
Norfolk & Norwich Uni. Hosp	617	18	97.1%	631	17	97.3%	650	14	97.8%	699	19	97.3%	10.5%
Norfolk PCT	-	-	-	-	-	-	-	-	-	-	-	-	-
Northampton General Hosp	328	-	100.0%	374	-	100.0%	417	-	100.0%	399	40	90.0%	7.0%
Northamptonshire Healthcare	-	-	-	-	-	-	-	-	-	-	-	-	-
Papworth Hospital NHS FT	-	-	-	-	-	-	-	-	-	-	-	-	-
Peterborough & Stamford H	422	1	99.8%	460	15	96.7%	460	7	98.5%	515	6	98.8%	15.1%
Southend University Hospital	355	15	95.8%	371	5	98.7%	378	5	98.7%	432	18	95.8%	17.4%
The Princess Alexandra Hosp	302	11	96.4%	384	17	95.6%	341	16	95.3%	371	12	96.8%	8.4%
The QEH, King's Lynn	200	4	98.0%	207	1	99.5%	204	6	97.1%	278	2	99.3%	36.5%
West Hertfordshire Hospitals	448	19	95.8%	451	21	95.3%	477	6	98.7%	580	47	91.9%	26.5%
West Suffolk NHS FT	323	11	96.6%	326	3	99.1%	276	3	98.9%	353	3	99.2%	14.5%
Anglia Cancer Network	3,446	103	97.0%	3,476	87	97.5%	3,457	71	97.9%	4,107	91	97.8%	18.7%
Essex Cancer Network	1,407	42	97.0%	1,405	32	97.7%	1,532	33	97.8%	1,704	66	96.1%	17.7%
Mount Vernon CN	1,029	26	97.5%	1,148	34	97.0%	1,172	24	98.0%	1,377	53	96.2%	23.4%
East of England SCN	5,882	171	97.1%	6,029	153	97.5%	6,161	128	97.9%	7,188	210	97.1%	19.3%
Anglia Area Team	3,446	103	97.0%	3,476	87	97.5%	3,457	71	97.9%	4,107	91	97.8%	18.7%
Essex Area Team	1,709	53	96.9%	1,789	49	97.3%	1,873	49	97.4%	2,075	78	96.2%	15.9%
Herts & South Midlands AT	2,080	35	98.3%	2,297	61	97.3%	2,396	35	98.5%	2,674	111	95.8%	18.4%
National Performance	96.8			96.0			96.8			95.9			
Operating Standard	93.0%			93.0%			93.0%			93.0%			

Breast symptomatic 2 Week Wait	2013Apr/May/Jun			2013Jul/Aug/Sep			2013Oct/Nov/Dec			2014Jan/Feb/Mar			% inc latest Q compared to Q1-3
	Total seen by specialist	After 14 days	Performance	Total seen by specialist	After 14 days	Performance	Total seen by specialist	After 14 days	Performance	Total seen by specialist	After 14 days	Performance	
Basildon and Thurrock	204	3	98.5%	230	7	97.0%	221	4	98.5%	267	9	96.6%	22.3%
Bedford Hospital NHS Trust	169	10	94.1%	140	8	94.3%	152	8	94.1%	170	18	89.4%	10.6%
Cambridge University Hosp	421	24	94.3%	415	24	94.2%	449	13	94.3%	521	21	96.0%	21.6%
Colchester Hospital University	492	19	96.1%	473	30	93.7%	491	40	96.1%	453	53	88.3%	-6.7%
East and North Hertfordshire	435	11	97.5%	456	19	95.8%	500	20	97.5%	505	20	96.0%	8.9%
Hinchingbrooke Health Care	182	4	97.8%	160	2	98.8%	155	3	97.8%	183	8	95.6%	10.5%
Ipswich Hospital	213	22	89.7%	316	19	94.0%	284	7	89.7%	289	9	96.9%	6.6%
James Paget University Hosp	103	4	96.1%	105	3	97.1%	94	2	96.1%	131	3	97.7%	30.1%
Kettering General Hospital	188	1	99.5%	204	9	95.6%	194	2	99.5%	214	6	97.2%	9.6%
Luton and Dunstable Uni	340	22	93.5%	330	17	94.8%	330	16	93.5%	340	9	97.4%	2.0%
Mid Essex Hospital Services	441	1	99.8%	433	8	98.2%	412	18	99.8%	631	19	97.0%	47.2%
Milton Keynes Hospital	257	18	93.0%	258	15	94.2%	263	5	93.0%	319	22	93.1%	23.0%
Norfolk & Norwich Uni. Hosp	551	20	96.4%	559	34	93.9%	598	24	96.4%	721	31	95.7%	26.6%
Norfolk PCT	-	-	-	-	-	-	-	-	-	-	-	-	-
Northampton General Hosp	235	-	100.0%	285	1	99.6%	220	1	100.0%	215	39	81.9%	-12.8%
Northamptonshire Healthcare	-	-	-	-	-	-	-	-	-	-	-	-	-
Papworth Hospital NHS FT	-	-	-	-	-	-	-	-	-	-	-	-	-
Peterborough & Stamford H	292	5	98.3%	326	13	96.0%	326	6	98.3%	341	4	98.8%	8.4%
Southend University Hospital	431	25	94.2%	436	17	96.1%	461	12	94.2%	526	57	89.2%	18.8%
The Princess Alexandra Hosp	364	23	93.7%	368	21	94.3%	403	31	93.7%	500	41	91.8%	32.2%
The QEH, King's Lynn	261	3	98.9%	229	4	98.3%	252	4	98.9%	301	15	95.0%	21.7%
West Hertfordshire Hospitals	467	41	91.2%	425	36	91.5%	467	23	91.2%	468	49	89.5%	3.3%
West Suffolk NHS FT	267	5	98.1%	289	4	98.6%	295	9	98.1%	388	4	99.0%	36.8%
Anglia Cancer Network	2,459	97	96.1%	2,539	111	95.6%	2,605	76	97.1%	3,045	113	96.3%	20.1%
Essex Cancer Network	1,568	48	96.9%	1,572	62	96.1%	1,585	74	95.3%	1,877	138	92.6%	19.2%
Mount Vernon CN	1,242	74	94.0%	1,211	72	94.1%	1,297	59	95.5%	1,313	78	94.1%	5.0%
East of England SCN	5,269	219	95.8%	5,322	245	95.4%	5,487	209	96.2%	6,235	329	94.7%	16.3%
Anglia Area Team	2,459	97	96.1%	2,539	111	95.6%	2,605	76	97.1%	3,045	113	96.3%	20.1%
Essex Area Team	1,932	71	96.3%	1,940	83	95.7%	1,988	105	94.7%	2,377	179	92.5%	21.7%
Herts & South Midlands AT	1,922	93	95.2%	1,958	97	95.0%	1,974	67	96.6%	2,061	145	93.0%	5.6%
National Performance	95.4			94.4			95.5			93.9			
Operating Standard	93.0%			93.0%			93.0%			93.0%			

Source: Open Exeter, May 2014

East of England SCN commissioner based number of 2WW referrals (figures will not match tables above which are provider based)

Year	Sum of Total number of patients seen				Network: Anglia, Essex & Mount Vernon				2008/09				2009/10				2010/11				2011/12				2012/13				2013/14				
	2006/07				2007/08				2008/09				2009/10				2010/11				2011/12				2012/13				2013/14				
Quarter	Q1	Q2	Q3	Q4	Q1	Q2	Q3	Q4	Q1	Q2	Q3	Q4	Q1	Q2	Q3	Q4	Q1	Q2	Q3	Q4	Q1	Q2	Q3	Q4	Q1	Q2	Q3	Q4	Q1	Q2	Q3	Q4	
Tumor Site	Pts Seen	Pts Seen	Pts Seen	Pts Seen	Pts Seen	Pts Seen	Pts Seen	Pts Seen	Pts Seen	Pts Seen	Pts Seen	Pts Seen	Pts Seen	Pts Seen	Pts Seen	Pts Seen	Pts Seen	Pts Seen	Pts Seen	Pts Seen	Pts Seen	Pts Seen	Pts Seen	Pts Seen	Pts Seen	Pts Seen	Pts Seen	Pts Seen	Pts Seen	Pts Seen	Pts Seen	Pts Seen	Pts Seen
Brain/CNS	35	37	41	41	56	57	63	60	52	54	71	78	64	102	92	74	82	75	103	92	93	94	99	114	114	81	97	104	107	103	114	105	102
Breast	3,313	3,129	3,514	3,242	3,288	3,201	3,627	3,648	3,885	3,781	3,932	4,114	4,461	4,482	4,756	4,766	5,047	5,355	4,926	5,167	5,253	5,063	5,413	5,393	5,310	5,116	5,954	5,564	5,874	6,007	6,115	7,188	
Children's	51	70	39	52	55	71	72	86	75	91	97	98	125	168	107	97	137	113	109	147	144	136	136	146	146	142	144	142	154	165	144	157	
Gynae	1,335	1,375	1,366	1,394	1,521	1,591	1,712	1,565	1,865	1,939	2,023	2,424	2,364	2,425	2,158	2,423	2,681	2,607	2,470	2,607	3,028	3,016	2,917	2,977	3,023	3,093	2,971	3,288	3,310	3,624	3,543		
Haematology	98	60	61	78	89	79	73	78	109	115	92	107	138	126	154	132	148	167	148	164	154	151	166	166	163	188	186	164	200	203	198	227	
Head and neck	1,081	1,014	1,039	1,021	1,142	1,246	1,221	1,300	1,470	1,533	1,609	1,437	1,894	1,785	1,794	1,715	2,061	2,142	2,135	2,164	2,540	2,315	2,546	2,447	2,749	2,966	2,882	2,643	3,032	3,032	3,094	3,222	
Lower GI	2,204	2,521	2,511	2,384	2,545	2,703	2,892	2,745	2,845	3,074	3,063	2,764	3,478	3,818	3,596	3,418	3,979	3,979	3,938	4,534	4,670	4,566	4,592	5,684	4,564	5,613	5,164	5,559	4,616	4,738	4,987	4,994	5,130
Lung	489	489	509	563	578	571	650	698	759	674	736	776	749	810	839	868	824	824	1,026	989	872	947	1,038	1,161	1,241	1,193	1,089	1,135	1,136	1,154	1,251		
Other	48	41	39	51	57	59	64	82	89	112	113	83	104	101	73	63	63	52	59	44	60	61	58	49	56	48	42	32	30	42	57	60	
Sarcoma	25	21	21	22	17	28	30	34	49	48	68	53	50	66	57	55	59	63	71	86	88	80	98	95	78	87	100	101	111	116	102	103	
Skin	2,105	2,525	2,162	2,108	2,555	3,023	2,607	2,471	3,622	4,150	3,379	2,999	4,479	5,251	4,264	3,895	4,768	5,566	4,449	3,869	5,435	5,793	5,435	5,793	4,490	5,147	6,891	5,113	6,056	7,382	6,246	5,994	
Upper GI	1,317	1,281	1,326	1,490	1,435	1,426	1,645	1,672	1,522	1,677	1,734	1,830	2,052	2,034	2,261	2,183	2,394	2,261	2,183	1,983	2,289	2,432	2,554	2,462	2,735	2,788	2,754	3,128	3,008	3,929	3,118	3,118	
Urology	1,515	1,547	1,860	1,926	2,033	1,435	1,426	1,645	1,672	1,522	1,677	1,734	1,830	2,052	2,034	2,261	2,183	2,394	2,261	2,183	1,983	2,289	2,432	2,554	2,462	2,735	2,788	2,754	3,128	3,008	3,929	3,118	3,118
Grand Total	13,616	14,110	14,488	14,372	15,371	16,142	17,076	16,756	18,327	19,759	19,526	19,058	23,080	24,087	23,653	22,504	24,404	26,336	24,854	25,570	28,176	28,109	28,549	29,169	30,125	31,884	32,183	29,389	31,631	33,822	34,363	35,107	

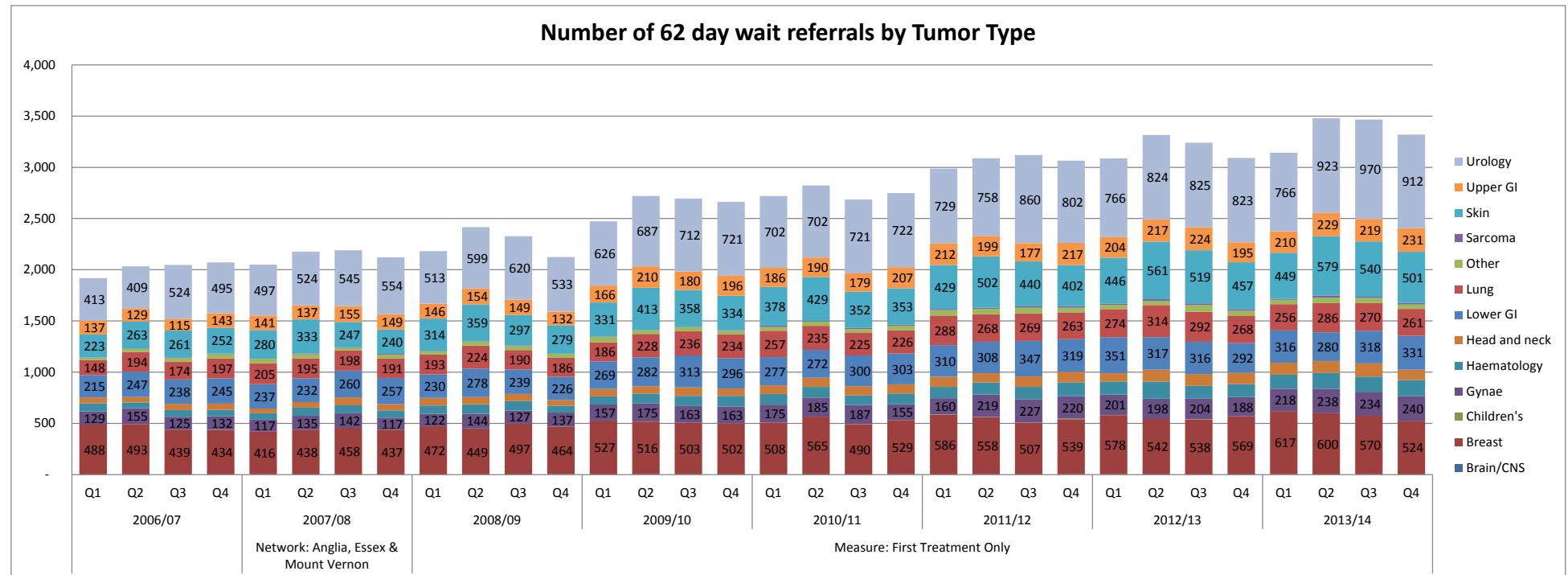


% increase in 2WW referrals over last five years (2009/10 to 2013/14)

	% increase
Brain/CNS	28%
Breast	36%
Children's	25%
Gynae	47%
Haematology	52%
Head and neck	72%
Lower GI	39%
Lung	47%
Other	-45%
Sarcoma	89%
Skin	44%
Upper GI	43%
Urology	50%
Grand Total	45%

East of England SCN provider based number of numbers treated on 62 day wait GP referral to first treatment pathway

Sum of Total number of patients seen					Network: Anglia, Essex & Mount Vernon				Measure: First Treatment Only																											
Year	2006/07				2007/08				2008/09				2009/10				2010/11				2011/12				2012/13				2013/14							
Quarter	Q1	Q2	Q3	Q4	Q1	Q2	Q3	Q4	Q1	Q2	Q3	Q4	Q1	Q2	Q3	Q4	Q1	Q2	Q3	Q4	Q1	Q2	Q3	Q4	Q1	Q2	Q3	Q4	Q1	Q2	Q3	Q4	Q1	Q2	Q3	Q4
Tumor Site	Pts Seer	Pts Seer	Pts Seer	Pts Seer	Pts Seer	Pts Seer	Pts Seer	Pts Seer	Pts Seer	Pts Seer	Pts Seer	Pts Seer	Pts Seer	Pts Seer	Pts Seer	Pts Seer	Pts Seer	Pts Seer	Pts Seer	Pts Seer	Pts Seer	Pts Seer	Pts Seer	Pts Seer	Pts Seer	Pts Seer	Pts Seer	Pts Seer	Pts Seer	Pts Seer	Pts Seer	Pts Seer	Pts Seer	Pts Seer	Pts Seer	Pts Seer
Brain/CNS				2	3	1		2	472	449	497	464	527	516	503	502	508	565	490	529	586	558	507	539	578	542	538	569	617	600	570	524				
Breast	488	493	439	434	416	438	458	437																												
Children's	1			2				1						1						1																
Gynae	129	155	125	132	117	135	142	117	122	144	127	137	157	175	163	163	175	185	187	155	160	219	227	220	201	198	204	188	218	238	234	240				
Haematology	78	57	67	62	63	79	77	71	82	92	92	68	79	96	100	103	105	104	93	106	109	118	119	136	126	167	122	127	136	156	148	158				
Head and neck	59	53	61	62	47	56	78	60	73	70	70	55	73	73	81	73	83	90	90	88	99	90	103	101	82	117	115	109	117	116	130	102				
Lower GI	215	247	238	245	237	232	260	257	230	278	239	226	269	282	313	296	277	272	300	303	310	308	347	319	351	317	316	292	316	280	318	331				
Lung	148	194	174	197	205	195	198	191	193	224	190	186	186	228	236	234	257	235	225	226	288	268	269	263	274	314	292	268	256	286	270	261				
Other	25	28	34	40	43	40	25	35	31	42	38	37	51	32	39	33	36	41	34	45	53	52	54	45	41	40	66	47	43	53	50	44				
Sarcoma	2	5	8	6	1	7	5	7	6	3	7	3	6	5	6	7	13	7	12	11	11	11	13	14	14	18	16	16	10	19	12	14				
Skin	223	263	261	252	280	333	247	240	314	359	297	279	331	413	358	334	378	429	352	353	429	502	440	402	446	561	519	457	449	579	540	501				
Upper GI	137	129	115	143	141	137	155	149	146	154	149	132	166	210	180	196	186	190	179	207	212	199	177	217	204	217	224	195	210	229	219	231				
Urology	413	409	524	495	497	524	545	554	513	599	620	533	626	687	712	721	702	702	721	722	729	758	860	802	824	825	823	766	923	970	912					
Grand Total	1,918	2,033	2,046	2,072	2,050	2,177	2,190	2,121	2,182	2,416	2,328	2,125	2,472	2,721	2,695	2,663	2,720	2,822	2,686	2,748	2,987	3,088	3,119	3,065	3,087	3,316	3,240	3,091	3,142	3,479	3,466	3,319				



% increase in 62 day wait GP referral to first treatment over last five years (2009/10 to 2013/14)

	% increase
Brain/CNS	13%
Breast	13%
Children's	0%
Gynae	41%
Haematology	58%
Head and neck	55%
Lower GI	7%
Lung	21%
Other	23%
Sarcoma	129%
Skin	44%
Upper GI	18%
Urology	30%
Grand Total	27%

Do cancer patients have equity of access to clinical trials?

Accrual by the Research Networks

Data show numbers and percentage of patients recruited to National Institute of Health (NIHR) randomised controlled trials (RCT) and NIHR non RCT studies.

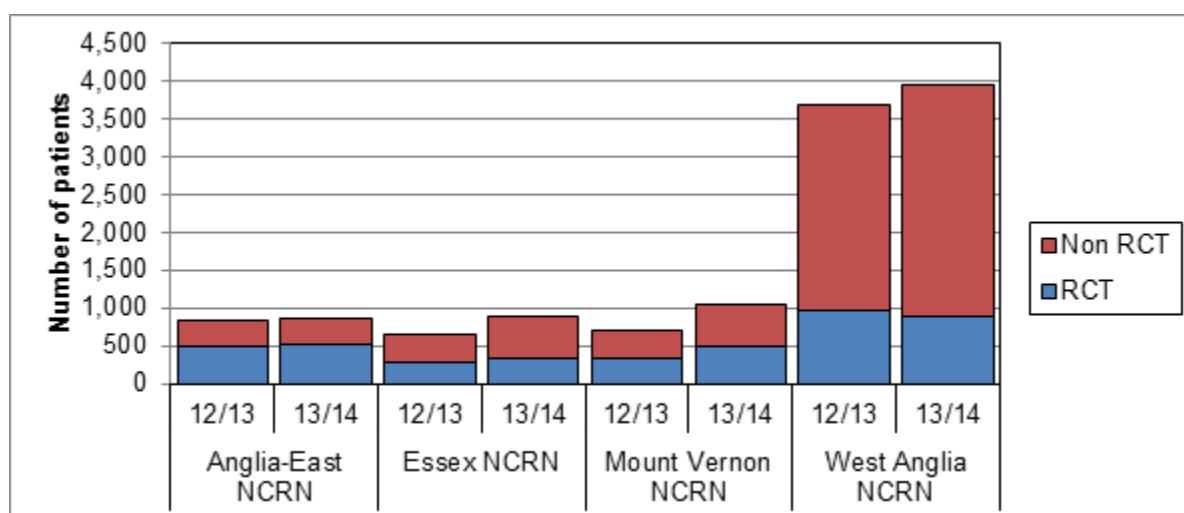
Recruitment targets are set by the National Cancer Research Network (NCRN). For 2013/14 these were set at:

- Overall recruitment (NIHR RCT and NIHR non-RCT) = 10.0%
- NIHR RCT accrual = 7.5%

Total Recruitment Q1, 2, 3 & 4 – 2013/14

Research Network	Annual incidence ⁴	NIHR RCT		NIHR non-RCT		NIHR RCT & NIHR non-RCT		Recruits that do not count towards targets
		No. patients	%	No. patients	%	No. patients	%	
AECRN	4,600	512	11.1%	352	7.7%	864	18.3%	760
WACRN	6,325	895	14.2%	3,062	48.4%	3,957	62.6%	530
Anglia (total)	10,925	1,407	12.8%	3,414	31.2%	4,821	44.1%	1,290
ECRN	5,980	336	5.61%	547	9.1%	883	14.8%	615
MVCRN	7,475	497	6.6%	551	7.4%	1,048	14.0%	1,000

Total number of patients recruited to (NIHR) randomised controlled trials (RCT) and NIHR non RCT studies over last two years



⁴ Incidence figures used by NCRN for performance monitoring purposes (updated 2006)

Domain 2: Enhancing Quality of Life for People with Long-Term Conditions

What are patient reported outcomes for cancer patients (PROMS)?

Do cancer patients have access to information and support they need?

Currently there are no indicators available for these metrics

Domain 3: Helping people to recover from episodes of ill health or following injury

National enhanced recovery programme indicators

Are people undergoing enhanced recovery programme procedures spending less time in hospital following their surgery (LOS)?

The SCN is unable to access HES data which provide this information.

Domain 4: Ensuring People Have a Positive Experience of Care

Are cancer patients reporting they are satisfied with their care? (patient experience surveys)

The [National Cancer Patient Experience](#) survey was published in September 2013. Trust level reports are available. The following tables present information relating to East of England trusts for all cancers combined. Results broken down for each tumour site are also available and are being reported to the NSSGs.

The full results are available as an appendix to this report (please request copies james.perry@nhs.net)

Nationally there has been a significant improvement in the scores in each of the three years the survey has been run.

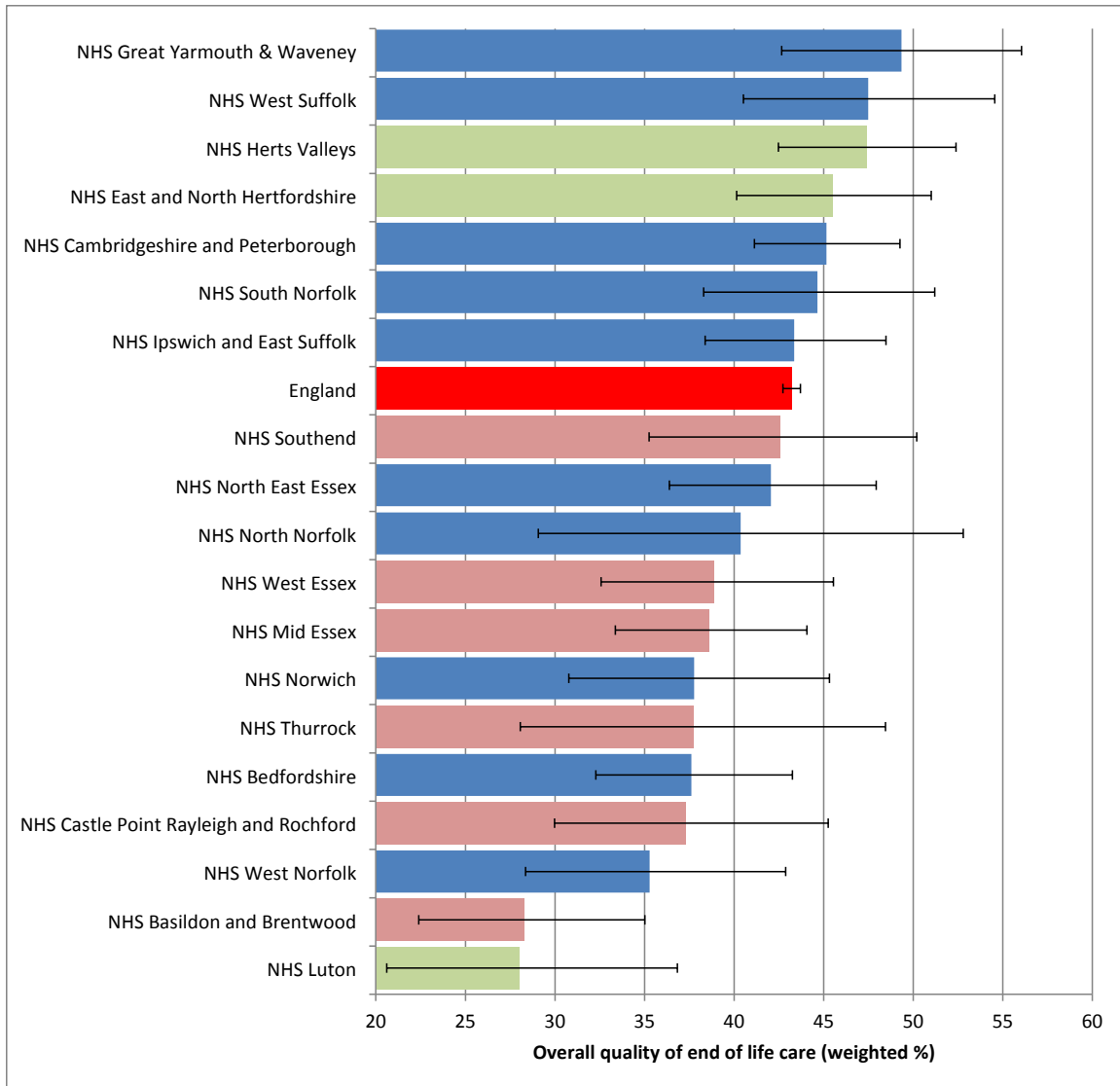
Are cancer patients dying at their preferred place of death?

There are three key datasets relevant to this.

- 1) The quarterly dataset showing number of cancer patients dying at their preferred place of death dataset is currently unavailable to Strategic Clinical Networks.
- 2) The National End of Life Care Intelligence Network recently published CCG end of life care profiles in April 2014. These are available in the form of interactive atlases. http://www.endoflifecare-intelligence.org.uk/end_of_life_care_profiles/ccg_profiles
- 3) The Voices National bereavement survey was published in July 2013. The national key findings were as follows:
 - The overall quality of care across all services in the last three months of life was rated by 44% of respondents as outstanding or excellent.
 - Respondents of those who died of cancer in their own home rated the quality of care most highly(63%).
 - Being shown dignity and respect by staff was highest in hospices (84% 'always' for hospice doctors and 82% for hospice nurses) and lowest in hospitals (59% 'always' for hospital doctors and 52% for hospital nurses).
 - For those who expressed a preference, the majority preferred to die at home (81%), although only half of these actually died at home (49%). The most commonly reported place of death was a hospital (52%).
 - Two-thirds of respondents (64%) reported that no decisions had been made about care which the patient would not have wanted. However, 17% of respondents said yes to this question.

Data is also available at [Area Team and CCG](#) level for key questions within the survey such as shown in the graph below.

Overall, and taking all services into account, how would you rate his/her care in the last three months of life? Percentages weighted in terms of population size that rate the service as Outstanding/Excellent are shown in the graph below



Source: [National Bereavement Survey, 2013](#)

Domain 5: Treating and Caring for People in a Safe Environment and Protecting Them From Avoidable Harm

See paper BHCNLCF-20140604-Paper06d-EoE Neutropenic Sepsis 2012_13 Results Overview by Network

Are the Network's trusts meeting peer review measures?

Has the Network implemented Improving Outcomes Guidance?

See paper 20140122 Paper07a Narrative for 2013 Cancer Quality and Safety Risks draft

Overarching indicators

Are Cancer MDTs submitting data as required to national audits and for cancer registration purposes?

COSD

The Cancer Outcomes and Services Dataset is a mandatory dataset that all Trusts are required to submit to the national cancer registration service. Compliance with the data set can be seen on the [National COSD conformance reporting site](#).

Level 1 Trusts are expected to send a monthly submission of all files agreed in their COSD Data Transfer Partnership Agreement. There are three measures; 1.1 all the required files must have been received on time for that month. If one or more is missing or late, the trust will be non-compliant (shown below); 1.2 data is reported within nationally stipulated COSD deadlines; and 1.3 data is sent in COSD compliant format.

Anglia	Jan	Feb	Mar	Apr
Bedford Hospital NHS Trust (RC1)	Red	Green	Green	Green
Cambridge University Hospitals NHS Foundation Trust (RGT)	Green	Green	Green	Green
Hinchingbrooke Health Care NHS Trust (ROQ)	Green	Green	Green	Green
Ipswich Hospital NHS Trust (RGO)	Green	Green	Green	Green
James Paget University Hospitals NHS Foundation Trust (RGP)	Green	Green	Green	Green
Norfolk and Norwich University Hospitals NHS Foundation Trust (RM1)	Green	Green	Green	Green
Papworth Hospital NHS Foundation Trust (RGM)	Green	Green	Green	Green
Peterborough and Stamford Hospitals NHS Foundation Trust (RGN)	Green	Green	Green	Green
The Queen Elizabeth Hospital, King's Lynn, NHS Foundation Trust (RCX)	Green	Green	Red	Green
West Suffolk NHS Foundation Trust (RGR)	Green	Red	Green	Green
Essex	Jan	Feb	Mar	Apr
Basildon and Thurrock University Hospitals NHS Foundation Trust (RDD)	Green	Green	Red	Green
Colchester Hospital University NHS Foundation Trust (RDE)	Green	Green	Green	Green
Mid Essex Hospital Services NHS Trust (RO8)	Green	Green	Green	Green
Southend University Hospital NHS Foundation Trust (RAJ)	Green	Green	Green	Grey
Mount Vernon	Jan	Feb	Mar	Apr
East and North Hertfordshire NHS Trust (RWH)	Green	Green	Green	Green
Luton and Dunstable University Hospital NHS Foundation Trust (RC9)	Green	Green	Green	Green
West Hertfordshire Hospitals NHS Trust (RWG)	Green	Red	Green	Green

Level 2 More detailed reports are available for Trusts uploading MDT data in compliant format. These are being sent by the cancer registry to Trust cancer managers and show monthly figures and completeness for numbers treated, basis for diagnosis, CNS contact, performance status and stage.

<http://cosd.ncr.nhs.uk/>

SACT Chemotherapy dataset

The [SACT website](#) contains reports on the data completeness for Trusts but also useful reports such as top Chemotherapy regimens in use at each Trust broken down by each tumour site. The table below shows considerable variation in the quality of data being submitted to the SACT dataset.

April 2013 to March 2014 SACT data completeness return

	New regimen records (in month)	New cycle records (in month)	Has e-prescribing system?	Cancer Centre?	Average Tumours per Patient	Average Regimens per Patient	Average Cycles per Patient	Average Cycles per Regimen	Average Drugs per Patient	Average Drugs per Cycle	% of Cycles with Drug records	Compliance	Volume
East of England	1,194	5,028			1.1	1.4	4.4	3.10	14.7	3.3	65%		
Basildon and Thurrock	0	0	Yes		1.0	1.1	3.7	3.47	13.4	3.6	91%	Low	Low
Bedford Hospital NHS Trust	25	142	No		1.0	1.4	3.7	2.65	6.2	1.7	86%	Low	High
Cambridge University Hosp	158	819	Yes	Y	1.2	1.5	5.2	3.41	45.8	8.9	98%	High	High
Colchester Hospital University	122	0	No	Y	1.1	1.7	3.7	2.18	0.0	0.0	0%	Low	Low
East and North Hertfordshire	179	1,232	Yes	Y	1.1	1.5	4.9	3.34	30.2	6.1	100%	High	High
Hinchingbrooke Health Care	53	214	No		1.0	1.3	4.2	3.22	8.2	2.0	100%	Low	Low
Ipswich Hospital	85	365	No	Y	1.2	1.6	4.4	2.80	3.1	0.7	14%	Low	High
James Paget University Hosp	57	323	No		1.0	1.4	5.4	3.75	2.1	0.4	17%	Low	Low
Luton and Dunstable Uni	9	47	No		1.0	1.0	1.8	1.74	3.5	1.9	97%	Low	Low
Mid Essex Hospital	0	0	No		1.0	1.2	5.6	4.78	0.0	0.0	0%	Low	Low
Norfolk & Norwich Uni. Hosp	194	956	Yes	Y	1.0	1.4	5.6	3.84	19.4	3.5	100%	High	High
Peterborough & Stamford H	78	275	No	Y	1.0	1.2	4.5	3.62	0.0	0.0	0%	High	High
Southend University Hospital	119	496	Yes	Y	1.1	1.2	1.3	1.13	1.0	0.7	38%	Low	High
The Princess Alexandra Hospital	45	0	Yes		1.4	1.9	4.4	2.25	5.0	1.1	100%	Low	Low
The QEH, King's Lynn	0	0	No		1.0	1.2	4.8	3.84	3.1	0.6	53%	Low	Low
West Hertfordshire Hospitals	13	51	No		1.3	2.3	3.8	1.64	0.8	0.2	3%	Low	Low
West Suffolk Hospitals	57	108	No		1.0	1.1	1.5	1.36	0.3	0.2	3%	Low	Low

Source: <http://www.chemodataset.nhs.uk/TopRegimens/Home/ChartBuilder>

[National Prostate Audit](#) (started April 2014 first report expected October 2014)

What are our clinical outcome datasets telling us?

Service profiles showing how each Trust MDT team compares to the national average for metrics relating to the following cancers:

- Breast
- Colorectal
- Gynaecological
- Head and Neck
- Lung
- Oesophago-gastric
- Sarcoma