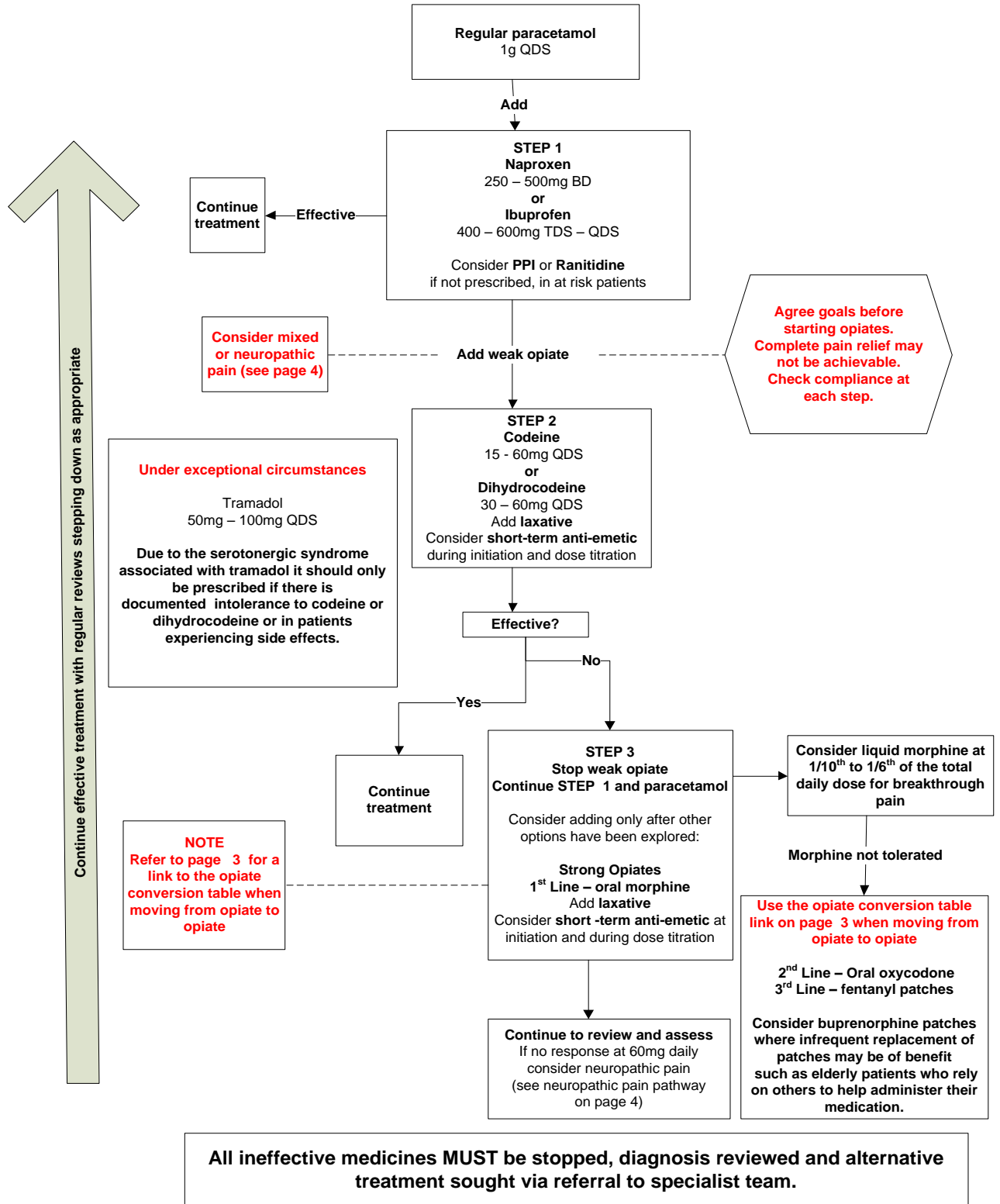




## Pain management Ladder for Non - cancer pain and Non-neuropathic pain

Non-pharmacological treatment (TENS, acupuncture and relaxation) should be incorporated and psychological problems addressed at all steps of treatment. Consider referral to IAPT.  
Refer to “[pain management in renal impairment guidelines](#)” for patients with chronic renal impairment.  
Refer to “[pain management in opioid dependent patients](#)” for patients with opioid dependence.



For more information please see NEE guidelines for the “Management of Non-cancer pain and Neuropathic pain”.

Approved by Medicines Management Committee March 2016

Review date: March 2018